

bs-25393R

[Primary Antibody]

POLK Rabbit pAb

Bioss
ANTIBODIES

www.bioss.com.cn

sales@bioss.com.cn

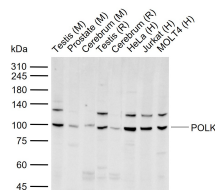
techsupport@bioss.com.cn

400-901-9800

DATASHEET

Host: Rabbit	Isotype: IgG	Applications: WB (1:500-2000) ELISA (1:5000-10000)
Clonality: Polyclonal		Reactivity: Human, Mouse, Rat (predicted: Pig, Sheep, Cow, Horse)
GeneID: 51426		Predicted MW.: 99 kDa
Target: POLK		Subcellular Location: Nucleus
Immunogen: KLH conjugated synthetic peptide derived from human POLK: 1-100/870.		
Purification: affinity purified by Protein A		
Concentration: 1mg/ml		
Storage: 0.01M TBS (pH7.4) with 1% BSA, 0.02% Proclin300 and 50% Glycerol. Shipped at 4°C. Store at -20°C for one year. Avoid repeated freeze/thaw cycles.		
Background: This gene encodes a member of the DNA polymerase type-Y family of proteins. The encoded protein is a specialized DNA polymerase that catalyzes translesion DNA synthesis, which allows DNA replication in the presence of DNA lesions. Human cell lines lacking a functional copy of this gene exhibit impaired genome integrity and enhanced susceptibility to oxidative damage. Mutations in this gene that impair enzyme activity may be associated with prostate cancer in human patients. [provided by RefSeq, Sep 2016]		

VALIDATION IMAGES



Sample: Lane 1: Mouse Testis tissue lysates Lane 2: Mouse Prostate tissue lysates Lane 3: Mouse Cerebrum tissue lysates Lane 4: Rat Testis tissue lysates Lane 5: Rat Cerebrum tissue lysates Lane 6: Human HeLa cell lysates Lane 7: Human Jurkat cell lysates Lane 8: Human MOLT4 cell lysates
Primary: Anti-POLK (bs-25393R) at 1/1000 dilution Secondary: IRDye800CW Goat Anti-Rabbit IgG at 1/20000 dilution Predicted band size: 99 kDa Observed band size: 100 kDa