

**bs-25397R****[ Primary Antibody ]****SLC5A1 Rabbit pAb****BioSS**  
**ANTIBODIES**

www.bioss.com.cn

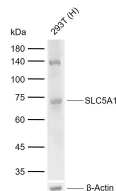
sales@bioss.com.cn

techsupport@bioss.com.cn

400-901-9800

**— DATASHEET —**

<b>Host:</b> Rabbit	<b>Isotype:</b> IgG	<b>Applications:</b> WB (1:500-2000)
<b>Clonality:</b> Polyclonal		<b>Reactivity:</b> Human (predicted: Mouse, Rat)
<b>GeneID:</b> 20537	<b>SWISS:</b> Q8C3K6	
<b>Target:</b> SLC5A1		<b>Predicted MW.:</b> 73 kDa
<b>Immunogen:</b> KLH conjugated synthetic peptide derived from mouse SLC5A1: 351-450/665.		<b>Subcellular Location:</b> Extracellular matrix
<b>Purification:</b> affinity purified by Protein A		
<b>Concentration:</b> 1mg/ml		
<b>Storage:</b> 0.01M TBS (pH7.4) with 1% BSA, 0.02% Proclin300 and 50% Glycerol. Shipped at 4°C. Store at -20°C for one year. Avoid repeated freeze/thaw cycles.		
<b>Background:</b> This gene encodes a member of the sodium-dependent glucose transporter (SGLT) family. The encoded integral membrane protein is the primary mediator of dietary glucose and galactose uptake from the intestinal lumen. Mutations in this gene have been associated with glucose-galactose malabsorption. Multiple transcript variants encoding different isoforms have been found for this gene. [provided by RefSeq, Jan 2012]		

**— VALIDATION IMAGES —**

Sample: Lane 1: Human 293T cell lysates

Primary: Anti-SLC5A1 (bs-25397R) at 1/1000

dilution Secondary: IRDye800CW Goat Anti-

Rabbit IgG at 1/20000 dilution Predicted band

size: 73 kDa Observed band size: 73 kDa

**— SELECTED CITATIONS —**

- **[IF=17.1]** Lei Liu. et al. Myricetin Oligomer Triggers Multi-Receptor Mediated Penetration and Autophagic Restoration of Blood-Brain Barrier for Ischemic Stroke Treatment. ACS NANO. 2024;XXXX(XXX):XXX-XXX WB ;Mouse. 38533773