

bs-3423R**[Primary Antibody]****phospho-TRIM28 (Ser824) Rabbit pAb****BioSS**
ANTIBODIES

www.bioss.com.cn

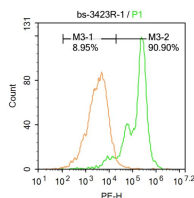
sales@bioss.com.cn

techsupport@bioss.com.cn

400-901-9800

DATASHEET

Host: Rabbit	Isotype: IgG	Applications: Flow-Cyt (1ug/test)
Clonality: Polyclonal		Reactivity: Human (predicted: Mouse, Rat)
GeneID: 10155	SWISS: Q13263	
Target: TRIM28 (Ser824)		Predicted MW.: 88 kDa
Immunogen: KLH conjugated Synthesised phosphopeptide derived from human TRIM28 around the phosphorylation site of Ser824: LS(p-S)QE.		Subcellular Location: Nucleus
Purification: affinity purified by Protein A		
Concentration: 1mg/ml		
Storage: 0.01M TBS (pH7.4) with 1% BSA, 0.02% Proclin300 and 50% Glycerol. Shipped at 4°C. Store at -20°C for one year. Avoid repeated freeze/thaw cycles.		
Background: The protein encoded by this gene mediates transcriptional control by interaction with the Kruppel-associated box repression domain found in many transcription factors. The protein localizes to the nucleus and is thought to associate with specific chromatin regions. The protein is a member of the tripartite motif family. This tripartite motif includes three zinc-binding domains, a RING, a B-box type 1 and a B-box type 2, and a coiled-coil region. [provided by RefSeq, Jul 2008]		

VALIDATION IMAGES

Molt-4 cells were fixed with 4% PFA for 10min at room temperature, permeabilized with 90% ice-cold methanol for 20 min at -20°C, and incubated in 5% BSA blocking buffer for 30 min at room temperature. Cells were then stained with Phospho-TIF1 beta(Ser824) Antibody(bs-3423R) at 1:500 dilution in blocking buffer and incubated for 30 min at room temperature, washed twice with 2%BSA in PBS, followed by secondary antibody incubation for 40 min at room temperature. Acquisitions of 20,000 events were performed. Cells stained with primary antibody (green), and isotype control (orange).

SELECTED CITATIONS

- **[IF=5.23]** Ding, Defang, et al. "γ-H2AX/53BP1/pKAP-1 foci and their linear tracks induced by in vitro exposure to radon and its progeny in human peripheral blood lymphocytes." Scientific Reports 6 (2016): 38295. ICC ;="Human". 27922110