

bs-3421R**[Primary Antibody]****Phospho-A Raf (Tyr301 + Tyr302) Rabbit pAb****BioSS**
ANTIBODIES

www.bioss.com.cn

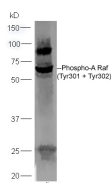
sales@bioss.com.cn

techsupport@bioss.com.cn

400-901-9800

— DATASHEET —

Host: Rabbit	Isotype: IgG	Applications: WB (1:500-2000)
Clonality: Polyclonal		Reactivity: Mouse (predicted: Human, Rat, Rabbit, Pig, Sheep, Cow, Dog, Horse)
GeneID: 369	SWISS: P10398	Predicted MW.: 67 kDa
Target: Phospho-A Raf (Tyr301 + Tyr302)		Subcellular Location: Cytoplasm
Immunogen: KLH conjugated Synthesised phosphopeptide derived from human A Raf around the phosphorylation site of Tyr301/302: G(p-Y)(p-Y)WE.		
Purification: affinity purified by Protein A		
Concentration: 1mg/ml		
Storage: 0.01M TBS (pH7.4) with 1% BSA, 0.02% Proclin300 and 50% Glycerol. Shipped at 4°C. Store at -20°C for one year. Avoid repeated freeze/thaw cycles.		
Background: The RAF family of signaling proteins has three isoforms: A RAF, RAF 1 and B RAF. These proteins are instrumental in forwarding the stimulus generated by mitogens from monomeric G proteins to the MAP kinase pathway. RAF 1 is known to be downstream of Ras and binds to it by an N terminal noncatalytic domain. This domain is conserved in A RAF and B RAF. 14-3-3 is also known to be an activator of RAFs. Activated RAF directly phosphorylates and activates MEK. A RAF is expressed at a very high concentration in urogenital and kidney tissues.		

— VALIDATION IMAGES —

Sample: Liver(Mouse) lysate at 30ug; Primary: Anti-Phospho-A Raf (Tyr301 + Tyr302) at 1:300 dilution; Secondary: HRP conjugated Goat-Anti-rabbit IgG(bs-0295G-HRP) at 1: 5000 dilution; Predicted band size:67 kD Observed band size:67 kD

— SELECTED CITATIONS —

- **[IF=14.3]** Zhuqi Huang. et al. Macrophage WEE1 Directly Binds to and Phosphorylates NF-κB p65 Subunit to Induce Inflammatory Response and Drive Atherosclerosis. ADV SCI. 2025 Apr;2503192 ;. 40202104