

bs-15378R**[Primary Antibody]****GPR142 Rabbit pAb****BioSS**
ANTIBODIES

www.bioss.com.cn

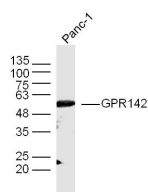
sales@bioss.com.cn

techsupport@bioss.com.cn

400-901-9800

— DATASHEET —

Host: Rabbit	Isotype: IgG	Applications: WB (1:500-2000)
Clonality: Polyclonal		Reactivity: Human
GeneID: 350383	SWISS: Q7Z601	
Target: GPR142		
Immunogen: KLH conjugated synthetic peptide derived from human GPR142 : 251-350/462. < Extracellular >		Predicted MW.: 51 kDa
Purification: affinity purified by Protein A		Subcellular Location: Cell membrane
Concentration: 1mg/ml		
Storage: 0.01M TBS (pH7.4) with 1% BSA, 0.02% Proclin300 and 50% Glycerol. Shipped at 4°C. Store at -20°C for one year. Avoid repeated freeze/thaw cycles.		
Background: GPR142 is a member of the rhodopsin family of G protein-coupled receptors (GPRs) (Fredriksson et al., 2003 [PubMed 14623098]).[supplied by OMIM, Mar 2008]		

— VALIDATION IMAGES —

Sample: panc-1 (human) Cell Lysate at 40 ug
Primary: Anti-GPR142(bs-15378R) at 1/300
dilution Secondary: IRDye800CW Goat Anti-
Rabbit IgG at 1/20000 dilution Predicted band
size: 51 kD Observed band size: 51 kD