

**bs-2156R****[ Primary Antibody ]****HER2 Rabbit pAb****Bioss**  
**ANTIBODIES**

www.bioss.com.cn

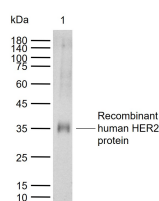
sales@bioss.com.cn

techsupport@bioss.com.cn

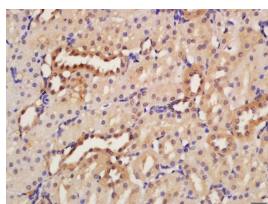
400-901-9800

**— DATASHEET —**

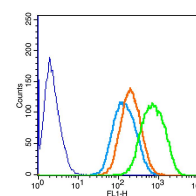
<b>Host:</b> Rabbit <b>Clonality:</b> Polyclonal <b>GeneID:</b> 2064 <b>Target:</b> HER2 <b>Immunogen:</b> KLH conjugated synthetic peptide derived from human HER2 receptor: 151-250/1255. <b>Purification:</b> affinity purified by Protein A <b>Concentration:</b> 1mg/ml <b>Storage:</b> 0.01M TBS (pH7.4) with 1% BSA, 0.02% Proclin300 and 50% Glycerol. Shipped at 4°C. Store at -20°C for one year. Avoid repeated freeze/thaw cycles. <b>Background:</b> This gene encodes a member of the epidermal growth factor (EGF) receptor family of receptor tyrosine kinases. This protein has no ligand binding domain of its own and therefore cannot bind growth factors. However, it does bind tightly to other ligand-bound EGF receptor family members to form a heterodimer, stabilizing ligand binding and enhancing kinase-mediated activation of downstream signalling pathways, such as those involving mitogen-activated protein kinase and phosphatidylinositol-3 kinase. Allelic variations at amino acid positions 654 and 655 of isoform a (positions 624 and 625 of isoform b) have been reported, with the most common allele, Ile654/Ile655, shown here. Amplification and/or overexpression of this gene has been reported in numerous cancers, including breast and ovarian tumors. Alternative splicing results in several additional transcript variants, some encoding different isoforms and others that have not been fully characterized. [provided by RefSeq, Jul 2008].	<b>Isotype:</b> IgG <b>SWISS:</b> P04626 <b>Applications:</b> <b>WB</b> (1:500-2000) <b>IHC-P</b> (1:100-500) <b>IHC-F</b> (1:100-500) <b>IF</b> (1:100-500) <b>Flow-Cyt</b> (1µg/Test) <b>Reactivity:</b> Human, Rat (predicted: Dog, Horse) <b>Predicted MW.:</b> 138 kDa <b>Subcellular Location:</b> Cell membrane ,Cytoplasm ,Nucleus
---	--

**— VALIDATION IMAGES —**

Sample: Lane 1: Recombinant human HER2 protein, N-His(bs-42263P) Primary: Anti-HER2 receptor(NT) (bs-2156R) at 1/1000 dilution  
Secondary: IRDye800CW Goat Anti-Rabbit IgG at 1/20000 dilution Predicted band size: 138 kDa  
Observed band size: 35 kDa



Tissue/cell: Rat kidney tissue; 4% Paraformaldehyde-fixed and paraffin-embedded; Antigen retrieval: citrate buffer (0.01M, pH 6.0 ), Boiling bathing for 15min; Block endogenous peroxidase by 3% Hydrogen peroxide for 30min; Blocking buffer (normal goat serum, C-0005) at 37°C for 20 min; Incubation: Anti-HER2 receptor (NT) Polyclonal Antibody, Unconjugated(bs-2156R) 1:200, overnight at 4°C, followed by conjugation to the secondary antibody(SP-0023) and DAB(C-0010) staining



The blue histogram is unstained cells (RSC96 cells). The Wathet Blue histogram is cells stained with secondary antibody alone. The Orange histogram is cells stained with rabbit IgG isotype control antibody plus secondary antibody. The green histogram is cells stained with Rabbit Anti-HER2 receptor(NT) antibody (bs-2156R)(5µg /10<sup>6</sup> cells) plus secondary antibody.

**— SELECTED CITATIONS —**

- **[IF=1.8]** Ruo-Long Su. et al. A high hydrophobic moment arginine-rich peptide screened by a machine learning algorithm enhanced ADC antitumor activity. J PEPT SCI. 2024 Jul;;e3628 FCM ;Human. 38950972

Important Note: This product as supplied is intended for research use only, not for use in human, therapeutic or diagnostic applications.