
CD20 Mouse mAb

Catalog Number: bsm-51506M

Target Protein: CD20

Concentration: 1mg/ml

Form: Liquid

Host: Mouse

Clonality: Monoclonal

Clone No.: F4D2

Isotype: IgG1

Applications: WB (1:500-2000)

Reactivity: Human

Predicted MW: 33 kDa

Entrez Gene: 931

Swiss Prot: P11836

Source: KLH conjugated synthetic peptide derived from human CD20: 201-297/297.

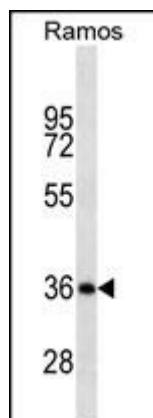
Purification: affinity purified by Protein G

Storage: 0.01M TBS (pH7.4) with 1% BSA, 0.02% Proclin300 and 50% Glycerol.

Shipped at 4°C. Store at -20°C for one year. Avoid repeated freeze/thaw cycles.

Background: CD20 is a non glycosylated protein with a molecular weight of 35 or 37 kDa depending on the degree of phosphorylation. Although not a member of the tetraspanin superfamily of cell surface receptors, it crosses the cell membrane four times. The CD20 antigen is present on human pre B lymphocytes and on B lymphocytes at all stages of maturation, except on plasma cells. Low level expression of the CD20 antigen has been detected on normal T lymphocytes. The CD20 molecule is involved in regulation of B cell differentiation, presumably via its reported function as a Ca⁺⁺ channel subunit.

VALIDATION IMAGES



Sample: Lane 1: Ramos cell lysates Primary: Anti-CD20 (bsm-51506M) at 1/1000 dilution Secondary: IRDye800CW Goat Anti-Mouse IgG at 1/20000 dilution Predicted band size: 33 kD Observed band size: 36 kD