
LPP Recombinant Rabbit mAb

Catalog Number: bsm-54756R

Target Protein: LPP

Concentration: 1mg/ml

Form: Liquid

Host: Rabbit

Clonality: Recombinant

Clone No.: 17H19

Isotype: IgG

Applications: WB (1:200-1000), IHC-P (1:50-100), IHC-F (1:50-100), IF (1:50-100)

Reactivity: Human, Mouse, Rat

Predicted MW: 66 kDa

Subcellular Cytoplasm ,Nucleus

Locations:

Entrez Gene: 4026

Swiss Prot: Q93052

Source: Recombinant Human LPP protein: 1-140/612.

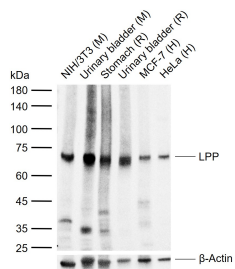
Purification: affinity purified by Protein A

Storage: 0.01M TBS(pH7.4) with 1% BSA, 0.02% Proclin300 and 50% Glycerol.

Shipped at 4°C. Store at -20 °C for one year. Avoid repeated freeze/thaw cycles.

Background: LPP (LIM containing lipoma preferred partner), is a scaffolding protein which contains three LIM domains at its carboxy terminus, preceded by a proline rich pre LIM region containing a number of protein interaction domains. LPP localizes to sites of cell adhesion, such as focal adhesions and cell-cell contacts and may be involved in cell-cell adhesion and cell motility. LPP also shuttles through the nucleus and may function as a transcriptional co-activator. The human LPP gene maps to chromosomal location 3q28, and preferentially translocates to the HMGIC gene in a subclass of human benign mesenchymal tumors known as lipomas. Alternate splicing results in multiple transcript variants.

VALIDATION IMAGES



Sample: Lane 1: Mouse NIH/3T3 cell lysates Lane 2: Mouse Urinary bladder tissue lysates Lane 3: Rat Stomach tissue lysates Lane 4: Rat Urinary bladder tissue lysates Lane 5: Human MCF-7 cell lysates Lane 6: Human HeLa cell lysates Primary: Anti-LPP (bsm-54756R) at 1/250 dilution Secondary: IRDye800CW Goat Anti-Rabbit IgG at 1/20000 dilution Predicted band size: 66 kDa Observed band size: 68 kDa