

bs-0608R**[Primary Antibody]****Bioss**
ANTIBODIES

www.bioss.com.cn

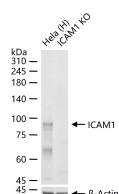
sales@bioss.com.cn

techsupport@bioss.com.cn

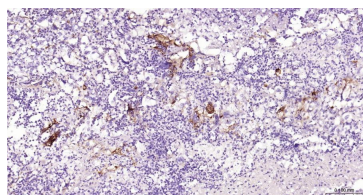
400-901-9800

ICAM1 Rabbit pAb**— DATASHEET —**

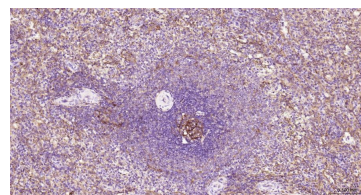
Host: Rabbit	Isotype: IgG	Applications: WB (1:500-2000)
Clonality: Polyclonal		IHC-P (1:100-500)
GeneID: 3383	SWISS: P05362	IHC-F (1:100-500)
Target: ICAM1		IF (1:100-500)
Immunogen: KLH conjugated synthetic peptide derived from human CD54: 201-300/537. < Extracellular >		Reactivity: Human
Purification: affinity purified by Protein A		
Concentration: 1mg/ml		Predicted MW.: 56 kDa
Storage: 0.01M TBS (pH7.4) with 1% BSA, 0.02% Proclin300 and 50% Glycerol. Shipped at 4°C. Store at -20°C for one year. Avoid repeated freeze/thaw cycles.		Subcellular Location: Cell membrane
Background: This gene encodes a cell surface glycoprotein which is typically expressed on endothelial cells and cells of the immune system. It binds to integrins of type CD11a / CD18, or CD11b / CD18 and is also exploited by Rhinovirus as a receptor. [provided by RefSeq, Jul 2008].		

— VALIDATION IMAGES —

25 ug total protein per lane of various lysates (see on figure) probed with ICAM1 polyclonal antibody, unconjugated (bs-0608R) at 1:1000 dilution and 4°C overnight incubation. Followed by conjugated secondary antibody incubation at r.t. for 60 min.



Paraformaldehyde-fixed, paraffin embedded Human Uterine body cancer; Antigen retrieval by boiling in sodium citrate buffer (pH6.0) for 15 min; Antibody incubation with ICAM1 Polyclonal Antibody, Unconjugated (bs-0608R) at 1:200 overnight at 4°C, followed by conjugation to the bs-0295G-HRP and DAB (C-0010) staining.



Paraformaldehyde-fixed, paraffin embedded Human Spleen; Antigen retrieval by boiling in sodium citrate buffer (pH6.0) for 15 min; Antibody incubation with ICAM1 Polyclonal Antibody, Unconjugated (bs-0608R) at 1:200 overnight at 4°C, followed by conjugation to the bs-0295G-HRP and DAB (C-0010) staining.

— SELECTED CITATIONS —

- **[IF=7.901]** Shim W et al. Catechin solubilization by spontaneous hydrogen bonding with poly(ethylene glycol) for dry eyetherapeutics. J Control Release. 2019 May 20. IHC ;Mouse. 31121276
- **[IF=7.5]** Xiangke Ma. et al. Salvia miltiorrhiza and Tanshinone IIA reduce endothelial inflammation and atherosclerotic plaque formation through inhibiting COX-2. BIOMED PHARMACOTHER. 2023 Nov;167:115501 WB ;Mouse,Human. 37713995
- **[IF=6.7]** Lijuan Shi. et al. Vascularized characteristics and functional regeneration of three-dimensional cell reconstruction of oral mucosa equivalents based on vascular homeostasis phenotypic modification. J TISSUE ENG. ;(): WB ;Human. 39301507
- **[IF=4.545]** Chae Eun Kim. et al. Cevimeline-induced anti-inflammatory effect through upregulations of mucins in the ocular surface of a dry eye mouse model. Biomed Pharmacother. 2021 Jul;139:111571 IHC ;Mouse. 33857915
- **[IF=5.201]** Qian Liet al. LOX-1 Regulates P. gingivalis-Induced Monocyte Migration and Adhesion to Human Umbilical

Important Note: This product as supplied is intended for research use only, not for use in human, therapeutic or diagnostic applications.

