

bs-1100R**[Primary Antibody]****CD36 Rabbit pAb****Bioss**
ANTIBODIES

www.bioss.com.cn

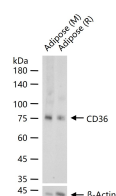
sales@bioss.com.cn

techsupport@bioss.com.cn

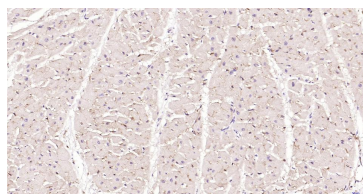
400-901-9800

DATASHEET**Host:** Rabbit**Isotype:** IgG**Clonality:** Polyclonal**GeneID:** 948**SWISS:** P16671**Target:** CD36**Immunogen:** KLH conjugated synthetic peptide derived from human CD36: 301-400/472. < Extracellular >**Purification:** affinity purified by Protein A**Concentration:** 1mg/ml**Storage:** 0.01M TBS (pH7.4) with 1% BSA, 0.02% Proclin300 and 50% Glycerol.

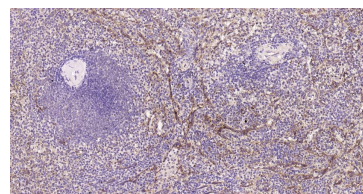
Shipped at 4°C. Store at -20°C for one year. Avoid repeated freeze/thaw cycles.

Background: The protein encoded by this gene is the fourth major glycoprotein of the platelet surface and serves as a receptor for thrombospondin in platelets and various cell lines. Since thrombospondins are widely distributed proteins involved in a variety of adhesive processes, this protein may have important functions as a cell adhesion molecule. It binds to collagen, thrombospondin, anionic phospholipids and oxidized LDL. It directly mediates cytoadherence of Plasmodium falciparum parasitized erythrocytes and it binds long chain fatty acids and may function in the transport and/or as a regulator of fatty acid transport. Mutations in this gene cause platelet glycoprotein deficiency. Multiple alternatively spliced transcript variants have been found for this gene. [provided by RefSeq, Feb 2014]**Applications:** WB (1:500-2000)**IHC-P** (1:50-200)**IHC-F** (1:50-200)**IF** (1:50-200)**Flow-Cyt** (1ug/Test)**IP** (1:20-50)**Reactivity:** Human, Mouse, Rat**Predicted MW.:** 52 kDa**Subcellular Location:** Cell membrane**VALIDATION IMAGES**

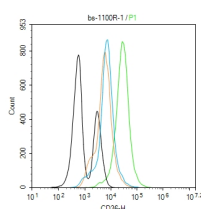
25 ug total protein per lane of various lysates (see on figure) probed with CD36 polyclonal antibody, unconjugated (bs-1100R) at 1:1000 dilution and 4°C overnight incubation. Followed by conjugated secondary antibody incubation at r.t. for 60 min.



Paraformaldehyde-fixed, paraffin embedded Human Heart; Antigen retrieval by boiling in sodium citrate buffer (pH6.0) for 15 min; Antibody incubation with CD36 Polyclonal Antibody, Unconjugated(bs-1100R) at 1:200 overnight at 4°C, followed by conjugation to the SP Kit (Rabbit, SP-0023) and DAB (C-0010) staining.



Paraformaldehyde-fixed, paraffin embedded Human Spleen; Antigen retrieval by boiling in sodium citrate buffer (pH6.0) for 15 min; Antibody incubation with CD36 Polyclonal Antibody, Unconjugated(bs-1100R) at 1:200 overnight at 4°C, followed by conjugation to the SP Kit (Rabbit, SP-0023) and DAB (C-0010) staining.



The U937(H) cells were incubated in 5%BSA to block non-specific protein-protein interactions (30 min at r.t.). Primary Antibody (green): Rabbit Anti-CD36 antibody (bs-1100R): 1 µg/10⁶ cells;

Important Note: This product as supplied is intended for research use only, not for use in human, therapeutic or diagnostic applications.

Secondary Antibody (white blue): Goat anti-Rabbit IgG-FITC (bs-40295G-FITC): 1 µg/test.
Isotype Control (orange): Rabbit IgG (bs-0295P).
Blank control (black): PBS. Acquisition of 20,000 events was performed.

— SELECTED CITATIONS —

- **[IF=3.974]** Astragaloside IV inhibits palmitate-mediated oxidative stress and fibrosis in human glomerular mesangial cells via downregulation of CD36 expression Y Su **WB ;Rat &Human**. 30826573
- **[IF=4.109]** Yu Haiyi. et al. The Foam Cell Formation Associated With Imbalanced Cholesterol Homeostasis Due to Airborne Magnetite Nanoparticles Exposure. **TOXICOL SCI**. 2022 Aug;; **WB ;Mouse,Human**. 35913497
- **[IF=2.752]** Jie Song. et al. Ethanol Extract of Artemisia Annua Prevents LPS-Induced Inflammation and Blood–Milk Barrier Disruption in Bovine Mammary Epithelial Cells. **ANIMALS**. 2022 Jan;12(10):1228 **WB ;Bovine**. 35625074
- **[IF=0]** Afolabi Oladele Ayobami. et al. Diet-induced insulin resistance altered cardiac GLUT4 and FATP/CD36 expression in rats. Beni-Suef University Journal of Basic and Applied Sciences. 2022 Dec;11(1):1-8 **IHC ;Rat**. 10.1186/s43088-022-00312-1