

bs-6322R**[Primary Antibody]****Annexin A8 Rabbit pAb****Bioss**
ANTIBODIES

www.bioss.com.cn

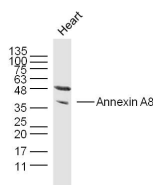
sales@bioss.com.cn

techsupport@bioss.com.cn

400-901-9800

— DATASHEET —

Host: Rabbit	Isotype: IgG	Applications: WB (1:500-2000)
Clonality: Polyclonal		Reactivity: Mouse (predicted: Human, Rat, Cow, Dog, Horse)
GeneID: 244	SWISS: P13928	
Target: Annexin A8		Predicted MW.: 37 kDa
Immunogen: KLH conjugated synthetic peptide derived from human Annexin A8: 101-200/327.		Subcellular Location: Cell membrane
Purification: affinity purified by Protein A		
Concentration: 1mg/ml		
Storage: 0.01M TBS (pH7.4) with 1% BSA, 0.02% Proclin300 and 50% Glycerol. Shipped at 4°C. Store at -20°C for one year. Avoid repeated freeze/thaw cycles.		
Background: Annexin A8 like 2 is a member of the annexin family of evolutionarily conserved Ca ²⁺ and phospholipid binding proteins. The protein may function as an anticoagulant that indirectly inhibits the thromboplastin-specific complex, and overexpression of this gene has been associated with acute myelocytic leukemia. A highly similar duplicated copy of this gene is found in close proximity on the long arm of chromosome 10.		

— VALIDATION IMAGES —

Sample: Heart (Mouse) Lysate at 40 ug Primary:

Anti- Annexin A8 (bs-6322R) at 1/300 dilution

Secondary: IRDye800CW Goat Anti-Rabbit IgG at

1/20000 dilution Predicted band size: 37 kD

Observed band size: 37 kD