

bs-6337R**[Primary Antibody]****ARH Rabbit pAb****Bioss**
ANTIBODIES

www.bioss.com.cn

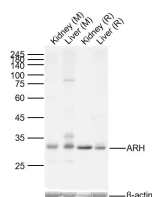
sales@bioss.com.cn

techsupport@bioss.com.cn

400-901-9800

— DATASHEET —

Host: Rabbit	Isotype: IgG	Applications: WB (1:500-2000) IHC-P (1:100-500) IHC-F (1:100-500) IF (1:100-500) ELISA (1:5000-10000) Reactivity: Mouse, Rat (predicted: Human, Rabbit, Pig, Sheep, Cow, Chicken, Dog, Horse) Predicted MW.: 34 kDa Subcellular Location: Cytoplasm
Clonality: Polyclonal		
GeneID: 26119	SWISS: Q5SW96	
Target: ARH		
Immunogen: KLH conjugated synthetic peptide derived from human ARH/LDL receptor adaptor protein: 41-140/308.		
Purification: affinity purified by Protein A		
Concentration: 1mg/ml		
Storage: 0.01M TBS (pH7.4) with 1% BSA, 0.02% Proclin300 and 50% Glycerol. Shipped at 4°C. Store at -20°C for one year. Avoid repeated freeze/thaw cycles.		
Background: The protein encoded by this gene is a cytosolic protein which contains a phosphotyrosine binding (PTD) domain. The PTD domain has been found to interact with the cytoplasmic tail of the LDL receptor. Mutations in this gene lead to LDL receptor malfunction and cause the disorder autosomal recessive hypercholesterolaemia.		

— VALIDATION IMAGES —

Sample: Lane 1: Mouse Kidney Lysates Lane 2:
Mouse Liver Lysates Lane 3: Rat Kidney Lysates
Lane 4: Rat Liver Lysates Primary: Anti-ARH
(bs-6337R) at 1/1000 dilution Secondary:
IRDye800CW Goat Anti-Rabbit IgG at 1/20000
dilution Predicted band size: 34kDa Observed
band size: 34kDa