

bs-6768R

[Primary Antibody]

PEF1 Rabbit pAb

Bioss
ANTIBODIES

www.bioss.com.cn

sales@bioss.com.cn

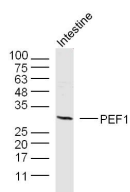
techsupport@bioss.com.cn

400-901-9800

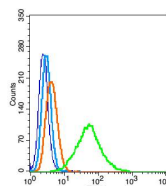
— DATASHEET —

Host: Rabbit	Isotype: IgG	Applications: WB (1:500-2000) Flow-Cyt (1 μ g/Test)
Clonality: Polyclonal		
GeneID: 553115	SWISS: Q9UBV8	
Target: PEF1		
Immunogen: KLH conjugated synthetic peptide derived from human PEF1: 121-230/284.		
Purification: affinity purified by Protein A		
Concentration: 1mg/ml		
Storage: 0.01M TBS (pH7.4) with 1% BSA, 0.02% Proclin300 and 50% Glycerol. Shipped at 4°C. Store at -20°C for one year. Avoid repeated freeze/thaw cycles.		
Background: PEF1 (penta-EF hand domain containing 1) is a Ca(2+)-binding protein that belongs to the penta-EF hand family which shares similarities to the apoptosis linked gene ALG-2. PEF1 heterodimerizes with PDCD6/ALG2 and dissociates from PDCD6/ALG2 in the presence of Ca(2+).		
	Reactivity: Human, Mouse (predicted: Rat, Pig, Sheep, Cow, Horse, Monkey)	
	Predicted MW.: 30 kDa	
	Subcellular Location: Cell membrane ,Cytoplasm	

— VALIDATION IMAGES —



Sample: Intestine (Mouse) Lysate at 40 μ g
Primary: Anti-PEF1 (bs-6768R) at 1/300 dilution
Secondary: IRDye800CW Goat Anti-Rabbit IgG at 1/20000 dilution Predicted band size: 30 kD
Observed band size: 30 kD



Blank control: HeLa(blue), the cells were fixed with 2% paraformaldehyde (10 min) and then permeabilized with ice-cold 90% methanol for 30 min on ice. Isotype Control Antibody: Rabbit IgG(orange) ; Secondary Antibody: Goat anti-rabbit IgG-FITC(white blue), Dilution: 1:200 in 1 X PBS containing 0.5% BSA ; Primary Antibody Dilution: 1 μ g in 100 μ L1X PBS containing 0.5% BSA(green).