

bs-6336R**[Primary Antibody]****APOB48R Rabbit pAb****BioSS**
ANTIBODIES

www.bioss.com.cn

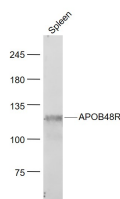
sales@bioss.com.cn

techsupport@bioss.com.cn

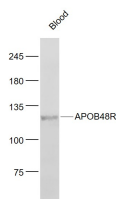
400-901-9800

— DATASHEET —

Host: Rabbit	Isotype: IgG	Applications: WB (1:500-2000)
Clonality: Polyclonal		Reactivity: Mouse (predicted: Human, Rat, Rabbit, Dog)
GeneID: 55911	SWISS: Q0VD83	
Target: APOB48R		Predicted MW.: 115 kDa
Immunogen: KLH conjugated synthetic peptide derived from human APOB48R: 1001-1088/1088.		Subcellular Location: Cell membrane
Purification: affinity purified by Protein A		
Concentration: 1mg/ml		
Storage: 0.01M TBS (pH7.4) with 1% BSA, 0.02% Proclin300 and 50% Glycerol. Shipped at 4°C. Store at -20°C for one year. Avoid repeated freeze/thaw cycles.		
Background: APOB48R is a macrophage receptor that binds to the apolipoprotein B48 of dietary triglyceride (TG) rich lipoproteins. It may provide essential lipids, lipid soluble vitamins and other nutrients to reticuloendothelial cells.		

— VALIDATION IMAGES —

Sample: Spleen (Mouse) Lysate at 40 ug Primary:
Anti- APOB48R (bs-6336R) at 1/1000 dilution
Secondary: IRDye800CW Goat Anti-Rabbit IgG at
1/20000 dilution Predicted band size: 115 kD
Observed band size: 115 kD



Sample: Blood(Mouse) Cell Lysate at 30 ug
Primary: Anti- APOB48R (bs-6336R) at 1/1000
dilution Secondary: IRDye800CW Goat Anti-
Rabbit IgG at 1/20000 dilution Predicted band
size: 115 kD Observed band size: 115 kD