

bsm-60888R**[Primary Antibody]**

Bioss
ANTIBODIES

www.bioss.com.cn

sales@bioss.com.cn

techsupport@bioss.com.cn

400-901-9800

Glutaminase Recombinant Rabbit mAb

DATASHEET

Host: Rabbit**Clonality:** Recombinant**GeneID:** 2744**Target:** Glutaminase**Immunogen:** A synthesized peptide derived from human GLS: 50-101/669.**Purification:** affinity purified by Protein A**Concentration:** 1mg/ml

Storage: 0.01M TBS(pH7.4) with 1% BSA, 0.02% Proclin300 and 50% Glycerol.
Shipped at 4°C. Store at -20 °C for one year. Avoid repeated freeze/thaw cycles.

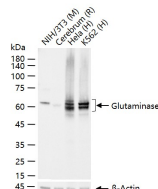
Background: This gene encodes the K-type mitochondrial glutaminase. The encoded protein is an phosphate-activated amidohydrolase that catalyzes the hydrolysis of glutamine to glutamate and ammonia. This protein is primarily expressed in the brain and kidney plays an essential role in generating energy for metabolism, synthesizing the brain neurotransmitter glutamate and maintaining acid-base balance in the kidney. Alternate splicing results in multiple transcript variants. [provided by RefSeq, Jan 2012].

Isotype: IgG**CloneNo.:** 15H3**SWISS:** O94925**Applications:** WB (1:500-2000)**IHC-P** (1:100-500)**IHC-F** (1:100-500)**IF** (1:100-500)**Flow-Cyt** (1ug/Test)**ICC/IF** (1:50-200)**Reactivity:** Human, Mouse, Rat

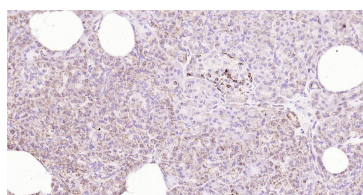
Predicted
MW.: 73 kDa

Subcellular
Location: Cytoplasm

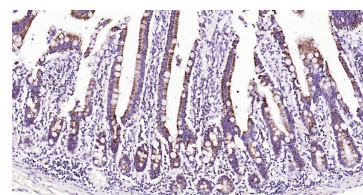
VALIDATION IMAGES



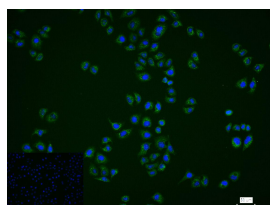
25 ug total protein per lane of various lysates (see on figure) probed with Glutaminase monoclonal antibody, unconjugated (bsm-60888R) at 1:2000 dilution and 4°C overnight incubation. Followed by conjugated secondary antibody incubation at r.t. for 60 min.



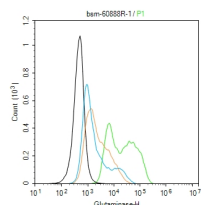
Paraformaldehyde-fixed, paraffin embedded Human Pancreas; Antigen retrieval by boiling in sodium citrate buffer (pH6.0) for 15 min; Antibody incubation with Glutaminase Monoclonal Antibody, Unconjugated(bsm-60888R) at 1:200 overnight at 4°C, followed by conjugation to the bs-0295G-HRP and DAB (C-0010) staining.



Paraformaldehyde-fixed, paraffin embedded Human Duodenum; Antigen retrieval by boiling in sodium citrate buffer (pH6.0) for 15 min; Antibody incubation with Glutaminase Monoclonal Antibody, Unconjugated(bsm-60888R) at 1:200 overnight at 4°C, followed by conjugation to the bs-0295G-HRP and DAB (C-0010) staining.



4% Paraformaldehyde-fixed MCF-7 (H) cell; Triton X-100 at r.t. for 20 min; Antibody incubation with (Glutaminase) monoclonal Antibody, unconjugated (bsm-60888R) 1:100, 90 min at 37°C; followed by conjugated Goat Anti-Rabbit IgG antibody (green, bs-40295G-FITC) at 37°C for 90 min, DAPI (blue, C02-04002) was used to stain the cell nuclei. PBS instead of the primary antibody was used as the blank control.



The HeLa (H) cells were fixed with 4% PFA (10 min at r.t.) and then permeabilized with 90% ice-cold methanol for 20 min at -20°C, the cells then were incubated in 5% BSA to block non-specific protein-protein interactions (30 min at r.t.). Primary Antibody (green): Rabbit Anti-Glutaminase antibody (bsm-60888R): 1 μg/10⁶ cells; Secondary Antibody (white blue): Goat anti-Rabbit IgG-FITC (bs-40295G-FITC): 1 μg/test. Isotype Control (orange): Rabbit IgG (bs-0295P).

Important Note: This product as supplied is intended for research use only, not for use in human, therapeutic or diagnostic applications.

Blank control (black): PBS. Acquisition of 20,000 events was performed.