

**bsm-52932R**

**[ Primary Antibody ]**

**Bioss**  
ANTIBODIES

www.bioss.com.cn

sales@bioss.com.cn

techsupport@bioss.com.cn

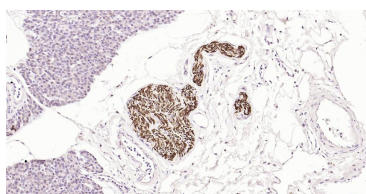
400-901-9800

## NEFM Recombinant Rabbit mAb

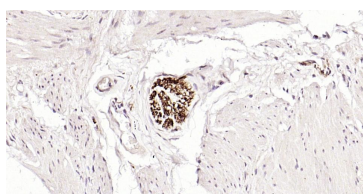
### — DATASHEET —

<b>Host:</b> Rabbit	<b>Isotype:</b> IgG	<b>Applications:</b> WB (1:500-2000) IHC-P (1:100-500) IHC-F (1:400-800) IF (1:100-200) ICC/IF (1:100-200)  <b>Reactivity:</b> Human   <b>Predicted MW.:</b> 102 kDa  <b>Subcellular Location:</b> Cytoplasm
<b>Clonality:</b> Recombinant	<b>CloneNo.:</b> 7G3	
<b>GeneID:</b> 4741	<b>SWISS:</b> P07197	
<b>Target:</b> NEFM		
<b>Immunogen:</b> A synthesized peptide derived from human NEFM: 650-700/916.		
<b>Purification:</b> affinity purified by Protein A		
<b>Concentration:</b> 1mg/ml		
<b>Storage:</b> 0.01M TBS (pH7.4) with 1% BSA, 0.02% Proclin300 and 50% Glycerol. Shipped at 4°C. Store at -20°C for one year. Avoid repeated freeze/thaw cycles.		
<b>Background:</b> Neurofilaments are the 10nm or intermediate filament proteins found specifically in neurons, and are composed predominantly of three major proteins called neurofilament light (NF-L), neurofilament medium (NF-M) and neurofilament heavy (NF-H). Neurofilament medium runs on SDS-PAGE gels in the range 145-170 kDa, with some variation in different species. Antibodies to this protein are useful to identify neurons and their processes in tissue sections and in tissue culture. Neurofilament medium can also be useful in studies of neurofilament accumulations seen in many neurological diseases, such as Lou Gehrig's disease or Alzheimer's disease.		

### — VALIDATION IMAGES —



Paraformaldehyde-fixed, paraffin embedded Human Pancreas; Antigen retrieval by boiling in sodium citrate buffer (pH6.0) for 15 min; Antibody incubation with NEFM Monoclonal Antibody, Unconjugated(bsm-52932R) at 1:200 overnight at 4°C, followed by conjugation to the SP Kit (Rabbit, SP-0023)and DAB (C-0010) staining.



Paraformaldehyde-fixed, paraffin embedded Human Stomach; Antigen retrieval by boiling in sodium citrate buffer (pH6.0) for 15 min; Antibody incubation with NEFM Monoclonal Antibody, Unconjugated(bsm-52932R) at 1:200 overnight at 4°C, followed by conjugation to the SP Kit (Rabbit, SP-0023)and DAB (C-0010) staining.