

bsm-41611M**[Primary Antibody]****sFlt1 Mouse mAb****Bioss**
ANTIBODIES

www.bioss.com.cn

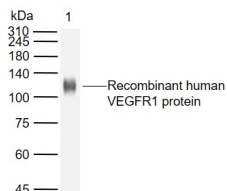
sales@bioss.com.cn

techsupport@bioss.com.cn

400-901-9800

— DATASHEET —

Host: Mouse	Isotype: IgG	Applications: WB (1:500-2000)
Clonality: Monoclonal	CloneNo.: 8B11	Reactivity: Human (predicted: Mouse)
GeneID: 2321	SWISS: P17948	
Target: sFlt1		
Immunogen: Recombinant human VEGFR1 protein: 27-687/687.		
Purification: affinity purified by Protein A		
Concentration: 1mg/ml		
Storage: Size : 50ul/100ul/200ul 0.01M PBS (pH7.4). Size : 200ug (PBS only) 0.01M PBS Shipped at 4°C. Store at -20°C for one year. Avoid repeated freeze/thaw cycles.		Predicted MW.: 147 kDa
Background: VEGF Receptor 1 (also known as FLT) belongs to the src gene family and shows tyrosine protein kinase activity that is important for the control of cell proliferation and differentiation. The protein acts as a receptor for VEGF, VEGFB and PGF. An alternatively spliced form of the gene produces a soluble protein (sFlt1) which binds vascular endothelial growth factor (VEGF) with high affinity. sFlt1 has a higher affinity for VEGF indicating that it may function as an inhibitor in the VEGF response. VEGF Receptor 1 is specifically expressed in most vascular endothelial cells and peripheral blood monocytes.		Subcellular Location: Secreted ,Cell membrane ,Cytoplasm

— VALIDATION IMAGES —

Sample: Lane 1: Recombinant human VEGFR1 protein, C-His (HEK293) Primary: Anti-sFlt1 (bsm-41611M) at 1/1000 dilution Secondary: IRDye800CW Goat Anti-Mouse IgG at 1/20000 dilution Predicted band size: 147 kDa Observed band size: 110 kDa