

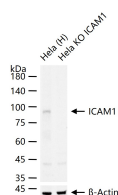
bsm-52466R**[Primary Antibody]****Bioss**
ANTIBODIES

www.bioss.com.cn

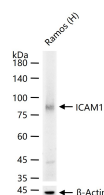
sales@bioss.com.cn

techsupport@bioss.com.cn

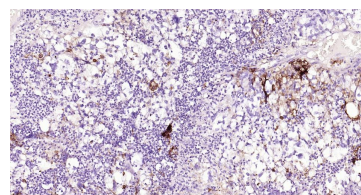
400-901-9800

ICAM1 Recombinant Rabbit mAb**DATASHEET****Host:** Rabbit**Isotype:** IgG**Clonality:** Recombinant**CloneNo.:** 1G2**GeneID:** 3383**SWISS:** P05362**Target:** ICAM1**Immunogen:** A synthesized peptide derived from human ICAM 1: 20-60.**Purification:** affinity purified by Protein A**Concentration:** 1mg/ml**Storage:** 0.01M TBS(pH7.4) with 1% BSA, 0.02% Proclin300 and 50% Glycerol.
Shipped at 4°C. Store at -20 °C for one year. Avoid repeated freeze/thaw cycles.**Background:** This gene encodes a cell surface glycoprotein which is typically expressed on endothelial cells and cells of the immune system. It binds to integrins of type CD11a / CD18, or CD11b / CD18 and is also exploited by Rhinovirus as a receptor. [provided by RefSeq, Jul 2008].**Applications:** **WB** (1:1000-5000)
IHC-P (1:200-1000)
IHC-F (1:200-1000)
IF (1:200-1000)**Reactivity:** Human**Predicted MW.:** 56 kDa**Subcellular Location:** Cell membrane**VALIDATION IMAGES**

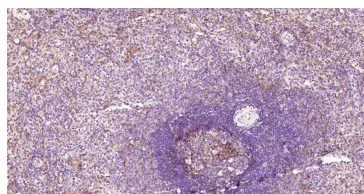
25 ug total protein per lane of various lysates (see on figure) probed with ICAM1 monoclonal antibody, unconjugated (bsm-52466R) at 1:1000 dilution and 4°C overnight incubation. Followed by conjugated secondary antibody incubation at r.t. for 60 min.



25 ug total protein per lane of various lysates (see on figure) probed with ICAM1 monoclonal antibody, unconjugated (bsm-52466R) at 1:1000 dilution and 4°C overnight incubation. Followed by conjugated secondary antibody incubation at r.t. for 60 min.



Paraformaldehyde-fixed, paraffin embedded Human Endometrial Cancer; Antigen retrieval by boiling in sodium citrate buffer (pH6.0) for 15 min; Antibody incubation with ICAM1 Monoclonal Antibody, Unconjugated(bsm-52466R) at 1:200 overnight at 4°C, followed by conjugation to the SP Kit(Rabbit, SP-0023) and DAB (C-0010) staining.



Paraformaldehyde-fixed, paraffin embedded Human Spleen; Antigen retrieval by boiling in sodium citrate buffer (pH6.0) for 15 min; Antibody incubation with ICAM1 Monoclonal Antibody, Unconjugated(bsm-52466R) at 1:200 overnight at 4°C, followed by conjugation to the SP Kit(Rabbit, SP-0023) and DAB (C-0010) staining.