

bs-2427R**[Primary Antibody]****NAV1.7 Rabbit pAb****Bioss**
ANTIBODIES

www.bioss.com.cn

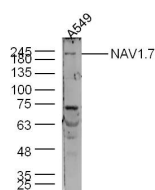
sales@bioss.com.cn

techsupport@bioss.com.cn

400-901-9800

— DATASHEET —

Host: Rabbit	Isotype: IgG	Applications: WB (1:500-2000)
Clonality: Polyclonal		Reactivity: Human (predicted: Mouse, Rat, Rabbit, Cow, Dog)
GeneID: 6335	SWISS: Q15858	
Target: NAV1.7		Predicted MW.: 219 kDa
Immunogen: KLH conjugated synthetic peptide derived from human SCN9A: 451-550/1988.		Subcellular Location: Cell membrane
Purification: affinity purified by Protein A		
Concentration: 1mg/ml		
Storage: 0.01M TBS (pH7.4) with 1% BSA, 0.02% Proclin300 and 50% Glycerol. Shipped at 4°C. Store at -20°C for one year. Avoid repeated freeze/thaw cycles.		
Background: This gene encodes a voltage-gated sodium channel which plays a significant role in nociception signaling. Mutations in this gene have been associated with primary erythralgia, channelopathy-associated insensitivity to pain, and paroxysmal extreme pain disorder. [provided by RefSeq, Aug 2009]		

— VALIDATION IMAGES —

Sample: A549 Cell (Human) Lysate at 30 ug
Primary: Anti-NAV1.7 (Bs- 2427R) at 1/300
dilution Secondary: IRDye800CW Goat Anti-Rabbit IgG at 1/20000 dilution Predicted band size: 219 kD Observed band size: 219 kD

— SELECTED CITATIONS —

- **[IF=2.456]** Lijun Cheng. et al. Effects of ticagrelor pretreatment on electrophysiological properties of stellate ganglion neurons following myocardial infarction. Clin Exp Pharmacol P. 2020 Dec;47(12):1932-1942 IHC ;Rabbit. 33459403