

**bs-34175R**

**[ Primary Antibody ]**

## TMEM52B Rabbit pAb

**BioSS**  
ANTIBODIES

www.bioss.com.cn

sales@bioss.com.cn

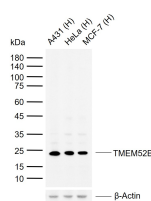
techsupport@bioss.com.cn

400-901-9800

### — DATASHEET —

<b>Host:</b> Rabbit	<b>Isotype:</b> IgG	<b>Applications:</b> WB (1:500-1000)
<b>Clonality:</b> Polyclonal		<b>Reactivity:</b> Human (predicted: Mouse)
<b>GeneID:</b> 120939		
<b>Target:</b> TMEM52B		
<b>Purification:</b> affinity purified by Protein A		
<b>Concentration:</b> 1mg/ml		
<b>Storage:</b> 0.01M TBS(pH7.4) with 1% BSA, 0.02% Proclin300 and 50% Glycerol. Shipped at 4°C. Store at -20 °C for one year. Avoid repeated freeze/thaw cycles.		<b>Predicted MW.:</b> 20 kDa
<b>Background:</b> Located in extracellular exosome. [provided by Alliance of Genome Resources, Apr 2022]		<b>Subcellular Location:</b> Cell membrane

### — VALIDATION IMAGES —



Sample: Lane 1: Human A431 cell lysates Lane 2: Human HeLa cell lysates Lane 3: Human MCF-7 cell lysates Primary: Anti-TMEM52B(bs-34175R) at 1/1000 dilution Secondary: IRDye800CW Goat Anti-Rabbit IgG at 1/20000 dilution Predicted band size: 20 kDa Observed band size: 23 kDa