

**bs-2412R****[ Primary Antibody ]****APNG/MPG Rabbit pAb****Bioss**  
**ANTIBODIES**

www.bioss.com.cn

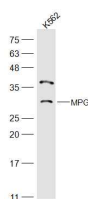
sales@bioss.com.cn

techsupport@bioss.com.cn

400-901-9800

**— DATASHEET —**

<b>Host:</b> Rabbit	<b>Isotype:</b> IgG	<b>Applications:</b> WB (1:500-2000)
<b>Clonality:</b> Polyclonal		<b>Reactivity:</b> Human (predicted: Mouse, Rat, Pig, Cow)
<b>GeneID:</b> 4350	<b>SWISS:</b> P29372	
<b>Target:</b> APNG/MPG		<b>Predicted MW.:</b> 33 kDa
<b>Immunogen:</b> KLH conjugated synthetic peptide derived from human APNG/MPG: 101-200/298.		<b>Subcellular Location:</b> Nucleus
<b>Purification:</b> affinity purified by Protein A		
<b>Concentration:</b> 1mg/ml		
<b>Storage:</b> 0.01M TBS (pH7.4) with 1% BSA, 0.02% Proclin300 and 50% Glycerol. Shipped at 4°C. Store at -20°C for one year. Avoid repeated freeze/thaw cycles.		
<b>Background:</b> MPG (N-methylpurine DNA glycosylase, or 3-methyladenine (3MeA) DNA glycosylase) repairs the 3MeA lethal lesion blocking DNA replication in Escherichia coli. Analysis of human cDNA libraries found a cDNA that would hybridize to human genomic DNA but not to E. coli or yeast DNA. This MPG gene has been mapped to human chromosome 16 by analysis of a panel of DNAs from mouse/human and hamster/human hybrid cell lines.		

**— VALIDATION IMAGES —**

Sample: K562(Human) Cell Lysate at 30 ug

Primary: Anti-MPG (bs-2412R) at 1/500 dilution

Secondary: IRDye800CW Goat Anti-Rabbit IgG at

1/20000 dilution Predicted band size: 33 kD

Observed band size: 33 kD

**— SELECTED CITATIONS —**

- **[IF=12.416]** Zhou, Zhen. et al. Metabolism regulator adiponectin prevents cardiac remodeling and ventricular arrhythmias via sympathetic modulation in a myocardial infarction model. BASIC RES CARDIOL. 2022 Dec;117(1):1-17 WB ;Dog. 35819552