

**bsm-52337R****[ Primary Antibody ]****Bioss**  
ANTIBODIES

www.bioss.com.cn

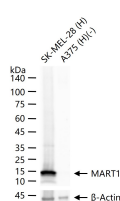
sales@bioss.com.cn

techsupport@bioss.com.cn

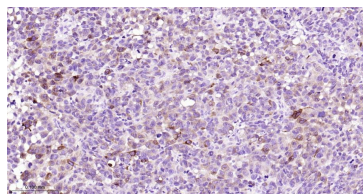
400-901-9800

**Melan A Recombinant Rabbit mAb****— DATASHEET —**

<b>Host:</b> Rabbit	<b>Isotype:</b> IgG	<b>Applications:</b> WB (1:500-2000) IHC-P (1:50-200) IHC-F (1:50-200) IF (1:50-200) Flow-Cyt (1:50-100) ICC/IF (1:50-200)  <b>Reactivity:</b> Human    <b>Predicted MW.:</b> 13 kDa  <b>Subcellular Location:</b> Cell membrane ,Cytoplasm
<b>Clonality:</b> Recombinant	<b>CloneNo.:</b> 6E11	
<b>GeneID:</b> 2315	<b>SWISS:</b> Q16655	
<b>Target:</b> Melan A		
<b>Immunogen:</b> A synthesized peptide derived from human MART1: 2-33.		
<b>Purification:</b> affinity purified by Protein A		
<b>Concentration:</b> 1mg/ml		
<b>Storage:</b> 0.01M TBS(pH7.4) with 1% BSA, 0.02% Proclin300 and 50% Glycerol. Shipped at 4°C. Store at -20 °C for one year. Avoid repeated freeze/thaw cycles.		
<b>Background:</b> Melan A, a product of the MART-1 gene, is a melanocyte differentiation marker recognized by autologous cytotoxic T lymphocytes. Other melanoma-associated markers recognized by autologous cytotoxic T cells are reported to include MAGE-1, MAGE-3, tyrosinase, gp100, gp75, BAGE-1 and GAGE-1. The analysis of these different molecules and their expression in individual melanomas may be of help in the study of their particular molecular roles in melanocyte differentiation and tumorigenesis.		

**— VALIDATION IMAGES —**

25 ug total protein per lane of various lysates (see on figure) probed with MART1 monoclonal antibody, unconjugated (bsm-52337R) at 1:1000 dilution and 4°C overnight incubation. Followed by conjugated secondary antibody incubation at r.t. for 60 min.



Paraformaldehyde-fixed, paraffin embedded Human melanoma; Antigen retrieval by boiling in sodium citrate buffer (pH6.0) for 15 min; Antibody incubation with Melan A Monoclonal Antibody, Unconjugated(bsm-52337R) at 1:200 overnight at 4°C, followed by conjugation to the bs-0295G-HRP and DAB (C-0010) staining.