

bsm-60737R**[Primary Antibody]**

Bioss
ANTIBODIES

www.bioss.com.cn

sales@bioss.com.cn

techsupport@bioss.com.cn

400-901-9800

CD11b Recombinant Rabbit mAb**— DATASHEET —****Host:** Rabbit**Isotype:** IgG**Clonality:** Recombinant**CloneNo.:** 20A14**GeneID:** 3684**SWISS:** P11215**Target:** CD11b**Purification:** affinity purified by Protein A**Concentration:** 1mg/ml

Storage: 0.01M TBS(pH7.4) with 1% BSA, 0.02% Proclin300 and 50% Glycerol.
Shipped at 4°C. Store at -20 °C for one year. Avoid repeated freeze/thaw cycles.

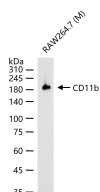
Background: This gene encodes the integrin alpha M chain. Integrins are heterodimeric integral membrane proteins composed of an alpha chain and a beta chain. This l-domain containing alpha integrin combines with the beta 2 chain (ITGB2) to form a leukocyte-specific integrin referred to as macrophage receptor 1 ('Mac-1'), or inactivated-C3b (iC3b) receptor 3 ('CR3'). The alpha M beta 2 integrin is important in the adherence of neutrophils and monocytes to stimulated endothelium, and also in the phagocytosis of complement coated particles. Multiple transcript variants encoding different isoforms have been found for this gene. [provided by RefSeq, Mar 2009]

Applications: **WB** (1:500-2000)
IHC-P (1:100-500)
IHC-F (1:100-500)
IF (1:100-500)

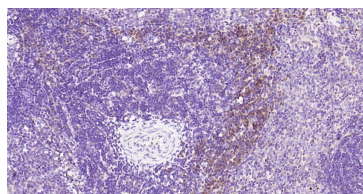
Reactivity: Mouse, Rat

Predicted
MW.: 125 kDa

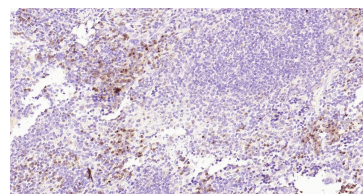
Subcellular
Location: Cell membrane

— VALIDATION IMAGES —

25 ug total protein per lane of various lysates (see on figure) probed with CD11b monoclonal antibody, unconjugated (bsm-60737R) at 1:600 dilution and 4°C overnight incubation. Followed by conjugated secondary antibody incubation at r.t. for 60 min.



Paraformaldehyde-fixed, paraffin embedded Rat Spleen; Antigen retrieval by boiling in sodium citrate buffer (pH6.0) for 15 min; Antibody incubation with CD11b Monoclonal Antibody, Unconjugated(bsm-60737R) at 1:200 overnight at 4°C, followed by conjugation to the bs-0295G-HRP and DAB (C-0010) staining and DAB (C-0010) staining.



Paraformaldehyde-fixed, paraffin embedded Mouse Spleen; Antigen retrieval by boiling in sodium citrate buffer (pH6.0) for 15 min; Antibody incubation with CD11b Monoclonal Antibody, Unconjugated(bsm-60737R) at 1:200 overnight at 4°C, followed by conjugation to the bs-0295G-HRP and DAB (C-0010) staining and DAB (C-0010) staining.