

Human Lamin B Ready-To-Use IHC Kit

Cat.No: IHC0183H
Applications: **IHC-P**
Reactivity: Human
Size: 50T
Assay type: Immunohistochemistry
Sample type: FFPE tissue
General Information:

Number	Component	Size	Concentration	Storage
1	PBS Buffer (powder)	2 L×2	20x	RT
2	Antigen Retrieval Buffer	20 ml	100x	2-8°C
3	Endogenous Peroxidase Blocking Buffer	3 ml	RTU	2-8°C, protect from light
4	Blocking Buffer	3 ml	RTU	2-8°C
5	Primary Antibody (Human Lamin B (Nuclear Loading Control) Mouse mAb)	6 ml	RTU	2-8°C
6	Secondary Antibody (HRP-Goat anti-Mouse IgG pAb)	6 ml	RTU	2-8°C
7	Chromogen Component A	0.3 ml	RTU	-20°C, protect from light
8	Chromogen Component B	0.3 ml	RTU	-20°C
9	Counter Staining Reagent	5 ml	RTU	RT
10	Mounting Media	5 ml	RTU	RT
11	Control slide (Human pancreas)	1 slide	RTU	RT
12	Datasheet	1 copy		

Immunohistochemistry Protocol:

1. Deparaffinization And Rehydration

Immerse slides in fresh xylene for 15 minutes and then repeat two more times using separate containers. Immerse slides sequentially in 100%, 95%, 90%, 80%, and 70% ethanol solutions for 5 minutes each. Rinse slides 3 times with distilled water for 5 minutes each.

2. Antigen Retrieval

Add 100× **Antigen Retrieval Buffer** into distilled water to prepare a 1× solution. Boil slides in 1× solution at 95°C-100°C for 15 minutes. Move the slides to 1× solution at room temperature (RT) and allow them to stand for 20 minutes. Rinse 3 times with **PBS Buffer** (dissolve the powder in 2L distilled water) for 5 minutes each.

3. Block Endogenous Peroxidase

Drain the liquid off the slides and then use a hydrophobic IHC pen to draw circles on the slides around tissue sections. Add 2-4 drops of **Endogenous Peroxidase Blocking Buffer** directly on slides, covering the whole tissue and block slides for 15 minutes at RT. Rinse 3 times with **PBS Buffer** for 5 minutes each.

4. Serum Blocking

Block with 2-4 drops of **Blocking Buffer** for 20 minutes at RT.

5. Primary Antibody Incubation

Drain blocking buffer from slides. Incubate slides with 2-4 drops of **Human Lamin B (Nuclear Loading Control) Mouse mAb** overnight at 4°C or 1-2 hours at RT. Rinse 3 times with **PBS Buffer** for 5 minutes each.

6. Secondary Antibody Incubation

Incubate slides with 2-4 drops of **HRP-Goat anti-Mouse IgG pAb** for 1-2 hours at RT. Rinse slides 3 times with **PBS Buffer** for 5 minutes each.

7. Signal Development

Remove residual liquid around the tissue section. Add 50ul fresh **DAB Buffer (Chromogen Component A : Chromogen Component B : PBS Buffer=1:1:18)** to cover the tissue. Monitor the reaction under the microscope until a brown color is visible (approximate 3-5 minutes at RT). Stop reaction immediately by rinsing with distilled water. Rinse slides 3 times with distilled water for 5 minutes each.

8. Counterstain

Counterstain with an appropriate amount of **Counter Staining Reagent** for 3-5 minutes at RT. Rinse slides with distilled water for 5 minutes. Use 2-4 drops of **Differentiation reagent** to cover the tissue for 30 seconds. Rinse slides twice with distilled water for 5 minutes each.

9. Dehydration Sheet

Immerse slides sequentially in 70%, 80%, 90%, 95%, and 100% ethanol for 5 minutes each at RT. Immerse slides in 2 changes of fresh xylene, 15 minutes each. Drop some **Mounting Media** on the tissue. Mount coverslips.

Notes:

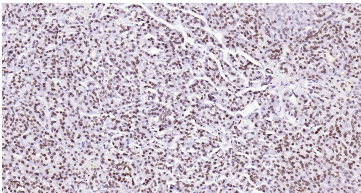
1. The positive control slide provided in the kit allows you to be sure that the experimental set-up is working properly.
2. Do not allow slides to dry at any time during this procedure.

3. Please don't replace the matching reagents in this product with other manufacturers' products.
4. As DAB is a carcinogen, please take necessary precautions.
5. PBS (reagent 1) can be stored for one week at 4°C after preparation; The antigen retrieval buffer (1× reagent 2) and the chromogenic agent (the mixture of reagents 7 and 8) should be prepared right before each assay.

Please cite this product as "IHC0183H, Bioss Antibodies". Citation example: "Human Tissue sections using LMNB1 IHC Kit (IHC0183H, Bioss Antibodies) were stained for LMNB1 according to the manufacturer's instructions."

Introduction: Laminins, a family of extracellular matrix glycoproteins, are the major noncollagenous constituent of basement membranes. They have been implicated in a wide variety of biological processes including cell adhesion, differentiation, migration, signaling, neurite outgrowth and metastasis. Laminins are composed of 3 non identical chains: laminin alpha, beta and gamma (formerly A, B1, and B2, respectively) and they form a cruciform structure consisting of 3 short arms, each formed by a different chain, and a long arm composed of all 3 chains. Defects in the LMNB1 gene can cause Leukodystrophy, demyelinating, autosomal dominant, adult-onset (ADLD).

Validation Data



Immunohistochemical analysis of paraffin embedded human pancreas tissue slide using IHC0183H (Human Lamin B IHC Kit).