

Recombinant human E-Selectin protein, C-His (HEK293)

Catalog Number: bs-43646P

Concentration: >1mg/ml

Species: Human

AA Seq: 22-556/610

Predicted MW: 60.6

Tags: C-His

Endotoxin: Not analyzed

Purity: >90% as determined by SDS-PAGE

Purification: AC

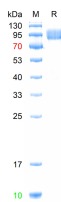
Form: Lyophilized or Liquid

Storage: PBS (pH=7.4).

Stored at -70°C or -20°C. Avoid repeated freeze/thaw cycles.

Background: The protein encoded by this gene is found in cytokine-stimulated endothelial cells and is thought to be responsible for the accumulation of blood leukocytes at sites of inflammation by mediating the adhesion of cells to the vascular lining. It exhibits structural features such as the presence of lectin- and EGF-like domains followed by short consensus repeat (SCR) domains that contain 6 conserved cysteine residues. These proteins are part of the selectin family of cell adhesion molecules. Adhesion molecules participate in the interaction between leukocytes and the endothelium and appear to be involved in the pathogenesis of atherosclerosis. [provided by RefSeq, Jul 2008]

VALIDATION IMAGES



The purity of the protein is greater than 90% as determined by reducing SDS-PAGE.