

bs-43572R**[Primary Antibody]****IL-22 Rabbit pAb****BioSS**
ANTIBODIES

www.bioss.com.cn

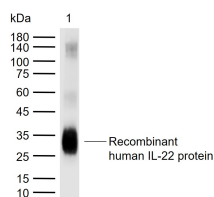
sales@bioss.com.cn

techsupport@bioss.com.cn

400-901-9800

— DATASHEET —

Host: Rabbit	Isotype: IgG	Applications: WB (1:500-2000)
Clonality: Polyclonal		Reactivity: Human (predicted: Rabbit, Dog, Horse)
GeneID: 50616	SWISS: Q9GZX6	
Target: IL-22		
Immunogen: Recombinant human IL-22 protein: 34-179/179.		Predicted MW.: 20 kDa
Purification: affinity purified by Protein A		Subcellular Location: Secreted
Concentration: 1mg/ml		
Storage: 0.01M TBS(pH7.4) with 1% BSA, 0.02% Proclin300 and 50% Glycerol. Shipped at 4°C. Store at -20 °C for one year. Avoid repeated freeze/thaw cycles.		
Background: This gene was identified by its overexpression specifically in herpesvirus samimiri-transformed T cells. The encoded protein is a member of the IL10 family of cytokines. It is a secreted protein and may function as a homodimer. This protein is thought to contribute to the transformed phenotype of T cells after infection by herpesvirus samimiri. [provided by RefSeq].		

— VALIDATION IMAGES —

Sample: Lane 1: Recombinant human IL-22 protein, C-His (HEK293)(bs-43572P) Primary: Anti-IL-22 (bs-43572R) at 1/1000 dilution
Secondary: IRDye800CW Goat Anti-Rabbit IgG at 1/20000 dilution Predicted band size: 20 kDa
Observed band size: 30 kDa