

bsm-60139M**[Primary Antibody]****Mono-Methyl-Histone H2B (Lys15) Mouse mAb****BioSS**
ANTIBODIES

www.bioss.com.cn

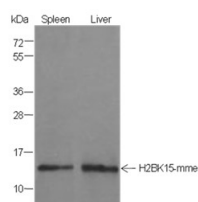
sales@bioss.com.cn

techsupport@bioss.com.cn

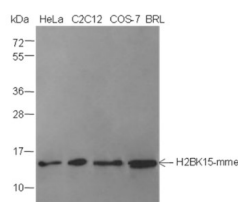
400-901-9800

— DATASHEET —

Host: Mouse	Isotype: IgG	Applications: WB (1:500-1:2000) Reactivity: Human, Mouse (predicted: Rat, Monkey) Predicted MW.: 14 kDa Subcellular Location: Nucleus
Clonality: Monoclonal	CloneNo.: E12G5	
Target: Mono-Methyl-Histone H2B (Lys15)		
Purification: Antigen affinity purification		
Concentration: 1mg/ml		
Storage: 0.01M TBS (pH7.4) with 1% BSA, 0.02% Proclin300 and 50% Glycerol. Shipped at 4°C. Store at -20°C for one year. Avoid repeated freeze/thaw cycles.		

— VALIDATION IMAGES —

Blocking buffer: 5% NFDM/TBST Primary ab
dilution: 1:2000 Primary ab incubation
condition: 2 hours at room temperature
Secondary ab: Goat Anti-Mouse IgG H&L (HRP)
Lysate: Mouse spleen, Mouse liver Protein
loading quantity: 20 µg Exposure time: 60 s
Predicted MW: 14 kDa Observed MW: 14 kDa



Blocking buffer: 5% NFDM/TBST Primary ab
dilution: 1:2000 Primary ab incubation
condition: 2 hours at room temperature
Secondary ab: Goat Anti-Mouse IgG H&L (HRP)
Lysate: HeLa, C2C12, COS-7, BRL Protein loading
quantity: 20 µg Exposure time: 60 s Predicted
MW: 14 kDa Observed MW: 14 kDa