

**bs-42274R****[ Primary Antibody ]****CD11a Rabbit pAb****Bioss**  
ANTIBODIES

www.bioss.com.cn

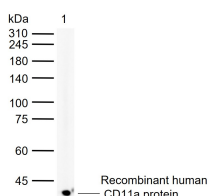
sales@bioss.com.cn

techsupport@bioss.com.cn

400-901-9800

**— DATASHEET —**

<b>Host:</b> Rabbit	<b>Isotype:</b> IgG	<b>Applications:</b> WB (1:500-2000)
<b>Clonality:</b> Polyclonal		<b>Reactivity:</b> Human
<b>GeneID:</b> 3683	<b>SWISS:</b> P20701	
<b>Target:</b> CD11a		
<b>Immunogen:</b> Recombinant human CD11a protein: 26-350/1086.		<b>Predicted MW.:</b> 126 kDa
<b>Purification:</b> affinity purified by Protein A		<b>Subcellular Location:</b> Cell membrane
<b>Concentration:</b> 1mg/ml		
<b>Storage:</b> 0.01M TBS(pH7.4) with 1% BSA, 0.03% Proclin300 and 50% Glycerol. Shipped at 4°C. Store at -20 °C for one year. Avoid repeated freeze/thaw cycles.		
<b>Background:</b> ITGAL encodes the integrin alpha L chain. Integrins are heterodimeric integral membrane proteins composed of an alpha chain and a beta chain. This I-domain containing alpha integrin combines with the beta 2 chain (ITGB2) to form the integrin lymphocyte function-associated antigen-1 (LFA-1), which is expressed on all leukocytes. LFA-1 plays a central role in leukocyte intercellular adhesion through interactions with its ligands, ICAMs 1-3 (intercellular adhesion molecules 1 through 3), and also functions in lymphocyte costimulatory signaling. Two transcript variants encoding different isoforms have been found for this gene. [provided by RefSeq, Jul 2008]		

**— VALIDATION IMAGES —**

Sample: Lane 1: Recombinant human CD11a protein, N-His(bs-42274P) Primary: Anti-CD11a (bs-42274R) at 1/1000 dilution Secondary: IRDye800CW Goat Anti-Rabbit IgG at 1/20000 dilution Predicted band size: 126 kDa Observed band size: 39 kDa

**— SELECTED CITATIONS —**

- **[IF=preprint]** Meilian Yu. et al. The expression of  $\beta$ 2-integrins LFA-1 and MAC-1 on Blood Leucocytes and Kidneys of Patients with ANCA-associated Glomerulonephritis. Research Square. IHC ;Human. 10.21203/rs.3.rs-3845012/v1