

## Mono-Methyl-Histone H4 (Lys20) Rabbit pAb

Catalog Number: bs-60123R

Target Protein: Mono-Methyl-Histone H4 (Lys20)

Concentration: 1mg/ml

Form: Liquid

Host: Rabbit

Clonality: Polyclonal

Isotype: IgG

Applications: WB (1:500-1:2000)

Reactivity: Human (predicted:Mouse, Rat, Monkey)

Predicted MW: 11 kDa

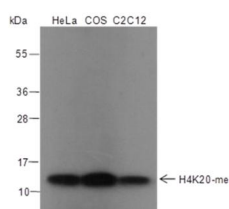
Purification: Antigen affinity purification

Storage: 0.01M TBS (pH7.4) with 1% BSA, 0.02% Proclin300 and 50% Glycerol.

Shipped at 4°C. Store at -20°C for one year. Avoid repeated freeze/thaw cycles.

**Background:** Histones are basic nuclear proteins that are responsible for the nucleosome structure of the chromosomal fiber in eukaryotes. Nucleosomes consist of approximately 146 bp of DNA wrapped around a histone octamer composed of pairs of each of the four core histones (H2A, H2B, H3, and H4). The chromatin fiber is further compacted through the interaction of a linker histone, H1, with the DNA between the nucleosomes to form higher order chromatin structures. This gene is intronless and encodes a member of the histone H4 family. Transcripts from this gene lack polyA tails; instead, they contain a palindromic termination element. [provided by RefSeq, Jul 2008]

### VALIDATION IMAGES



Blocking buffer: 5% NFDM/TBST Primary ab dilution: 1:2000 Primary ab incubation condition: 2 hours at room temperature Secondary ab: Goat Anti-Rabbit IgG H&L (HRP) Lysate: HeLa, COS, C2C12 Protein loading quantity: 20 µg Exposure time: 30 s Predicted MW: 11 kDa Observed MW: 11 kDa