

Recombinant human ITGB3 protein, N-His

Catalog Number: bs-42295P

Concentration: >1mg/ml

Species: Human

AA Seq: 634-718/788

Predicted MW: 13.7

Tags: N-His

Endotoxin: Not analyzed

Purity: >90% as determined by SDS-PAGE

Purification: AC

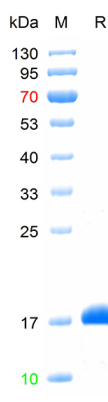
Form: Lyophilized or Liquid

Storage: 20mM Tris-HCl (pH=8.0)

Stored at -70°C or -20°C. Avoid repeated freeze/thaw cycles.

Background: The ITGB3 protein product is the integrin beta chain beta 3. Integrins are integral cell-surface proteins composed of an alpha chain and a beta chain. A given chain may combine with multiple partners resulting in different integrins. Integrin beta 3 is found along with the alpha IIb chain in platelets. Integrins are known to participate in cell adhesion as well as cell-surface mediated signalling. [provided by RefSeq, Jul 2008]

VALIDATION IMAGES



The purity of the protein is greater than 90% as determined by reducing SDS-PAGE.