

bs-4896R**[Primary Antibody]****CD66a Rabbit pAb****BioSS**
ANTIBODIES

www.bioss.com.cn

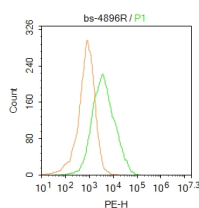
sales@bioss.com.cn

techsupport@bioss.com.cn

400-901-9800

— DATASHEET —

Host: Rabbit Clonality: Polyclonal GeneID: 634 Target: CD66a Immunogen: KLH conjugated synthetic peptide derived from human CEACAM1: 241-310/526. < Extracellular > Purification: affinity purified by Protein A Concentration: 1mg/ml Storage: 0.01M TBS (pH7.4) with 1% BSA, 0.02% Proclin300 and 50% Glycerol. Shipped at 4°C. Store at -20°C for one year. Avoid repeated freeze/thaw cycles. Background: This gene encodes a member of the carcinoembryonic antigen (CEA) gene family, which belongs to the immunoglobulin superfamily. Two subgroups of the CEA family, the CEA cell adhesion molecules and the pregnancy-specific glycoproteins, are located within a 1.2 Mb cluster on the long arm of chromosome 19. Eleven pseudogenes of the CEA cell adhesion molecule subgroup are also found in the cluster. The encoded protein was originally described in bile ducts of liver as biliary glycoprotein. Subsequently, it was found to be a cell-cell adhesion molecule detected on leukocytes, epithelia, and endothelia. The encoded protein mediates cell adhesion via homophilic as well as heterophilic binding to other proteins of the subgroup. Multiple cellular activities have been attributed to the encoded protein, including roles in the differentiation and arrangement of tissue three-dimensional structure, angiogenesis, apoptosis, tumor suppression, metastasis, and the modulation of innate and adaptive immune responses. Multiple transcript variants encoding different isoforms have been reported, but the full-length nature of all variants has not been defined. [provided by RefSeq, May 2010].	Isotype: IgG SWISS: P13688	Applications: Flow-Cyt (1ug/Test) Reactivity: Human (predicted: Mouse, Rat, Dog, Horse) Predicted MW.: 57 kDa Subcellular Location: Secreted ,Cell membrane
--	---	--

— VALIDATION IMAGES —

Blank control: HepG2. Primary Antibody (green line): Rabbit Anti-CD66a antibody (bs-4896R)

Dilution: 1µg/10⁶ cells; Isotype Control

Antibody (orange line): Rabbit IgG. Secondary Antibody : Goat anti-rabbit IgG-PE Dilution: 1µg /test. Protocol

The cells then incubated in 5%BSA to block non-specific protein-protein interactions for 30 min at room temperature .Cells stained with Primary Antibody for 30 min at room temperature. The secondary antibody used for 40 min at room temperature.

Acquisition of 20,000 events was performed.