

bs-34246R

[Primary Antibody]

ARRDC5 Rabbit pAb

BioSS
ANTIBODIES

www.bioss.com.cn

sales@bioss.com.cn

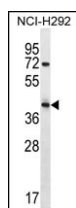
techsupport@bioss.com.cn

400-901-9800

— DATASHEET —

Host: Rabbit	Isotype: IgG	Applications: WB (1:500-1000)
Clonality: Polyclonal		Reactivity: Human (predicted: Cow)
GeneID: 645432		
Target: ARRDC5		
Immunogen: KLH conjugated synthetic peptide derived from human ARRDC5: 61-110/342.		Predicted MW.: 38 kDa
Purification: affinity purified by Protein A		Subcellular Location: Cell membrane ,Cytoplasm
Concentration: 1mg/ml		
Storage: 0.01M TBS (pH7.4) with 1% BSA, 0.02% Proclin300 and 50% Glycerol. Shipped at 4°C. Store at -20°C for one year. Avoid repeated freeze/thaw cycles.		
Background: Predicted to enable ubiquitin ligase-substrate adaptor activity and ubiquitin protein ligase binding activity. Predicted to be involved in protein transport. Predicted to be active in cytoplasm. [provided by Alliance of Genome Resources, Apr 2022]		

— VALIDATION IMAGES —



ARRDC5 Antibody (N-term) (Cat. #AP12442a)
western blot analysis in NCI-H292 cell line
lysates (35ug/lane). This demonstrates the
ARRDC5 antibody detected the ARRDC5 protein
(arrow).