

**bs-6101R****[ Primary Antibody ]****RUNX1T1 Rabbit pAb****Bioss**  
**ANTIBODIES**

www.bioss.com.cn

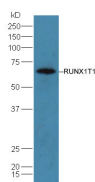
sales@bioss.com.cn

techsupport@bioss.com.cn

400-901-9800

**— DATASHEET —**

<b>Host:</b> Rabbit	<b>Isotype:</b> IgG	<b>Applications:</b> WB (1:500-2000)
<b>Clonality:</b> Polyclonal		<b>Reactivity:</b> Mouse (predicted: Human, Rat, Rabbit, Pig, Chicken, Dog, Horse)
<b>GeneID:</b> 862	<b>SWISS:</b> Q06455	<b>Predicted MW.:</b> 66 kDa
<b>Target:</b> RUNX1T1		<b>Subcellular Location:</b> Nucleus
<b>Immunogen:</b> KLH conjugated synthetic peptide derived from human RUNX1T1/ETO: 431-530/604.		
<b>Purification:</b> affinity purified by Protein A		
<b>Concentration:</b> 1mg/ml		
<b>Storage:</b> 0.01M TBS (pH7.4) with 1% BSA, 0.02% Proclin300 and 50% Glycerol. Shipped at 4°C. Store at -20°C for one year. Avoid repeated freeze/thaw cycles.		
<b>Background:</b> RUNX1T1 is a putative zinc finger transcription factor and oncoprotein. In acute myeloid leukemia, especially in the M2 subtype, the t(8;21)(q22;q22) translocation is one of the most frequent karyotypic abnormalities. The translocation produces a chimeric gene made up of the 5'-region of the RUNX1 gene fused to the 3'-region of this gene. The chimeric protein is thought to associate with the nuclear corepressor/histone deacetylase complex to block hematopoietic differentiation. Several transcript variants encoding multiple isoforms have been found for this gene.		

**— VALIDATION IMAGES —**

Sample: Brain (Mouse) Lysate at 40 ug Primary:  
Anti-RUNX1T1 (bs-6101R) at 1/300 dilution  
Secondary: HRP conjugated Goat-Anti-rabbit IgG  
(bs-0295G-HRP) at 1/5000 dilution Predicted  
band size: 66 kD Observed band size: 66 kD