

bs-41336R**[Primary Antibody]****NUMA1 Rabbit pAb****BioSS**
ANTIBODIES

www.bioss.com.cn

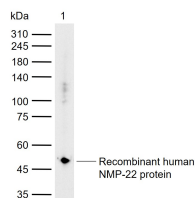
sales@bioss.com.cn

techsupport@bioss.com.cn

400-901-9800

— DATASHEET —

Host: Rabbit	Isotype: IgG	Applications: WB (1:500-2000)
Clonality: Polyclonal		Reactivity: Human (predicted: Mouse, Rat)
GeneID: 4926	SWISS: Q14980	
Target: NUMA1		Predicted MW.: 238 kDa
Immunogen: Recombinant human NMP-22 protein: 2-410/2115.		Subcellular Location: Cytoplasm ,Nucleus
Purification: affinity purified by Protein A		
Concentration: 1mg/ml		
Storage: 0.01M TBS (pH7.4) with 1% BSA, 0.02% Proclin300 and 50% Glycerol. Shipped at 4°C. Store at -20°C for one year. Avoid repeated freeze/thaw cycles.		
Background: Healthy individuals generally have very small amounts of NMP22 protein in the urine. However, the level of NMP22 protein is often elevated in the urine of patients with bladder cancer, even at early stages of the disease. ¹ The Alere NMP22 Test is an enzyme immunoassay for the quantitative determination of nuclear mitotic apparatus protein (NuMA) in stabilized voided urine. NuMA is an abundant component of the nuclear matrix proteins (NMP22). The Alere NMP22?BladderChek?Test is the only in-office test approved by the FDA as an aid in the diagnosis and monitoring of bladder cancer in conjunction with standard diagnostic procedures. Both assays are painless and non-invasive and detect elevated levels of NMP22 protein.		

— VALIDATION IMAGES —

Sample: Lane 1: Recombinant human NMP-22 protein, His(bs-41336P) Primary: Anti-NUMA1 (bs-41336R) at 1/1000 dilution Secondary: IRDye800CW Goat Anti-Rabbit IgG at 1/20000 dilution Predicted band size: 238 kDa Observed band size: 48 kDa