

bs-6103R

[Primary Antibody]

SEZ6L Rabbit pAb

Bioss
ANTIBODIES

www.bioss.com.cn

sales@bioss.com.cn

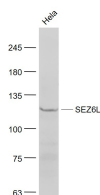
techsupport@bioss.com.cn

400-901-9800

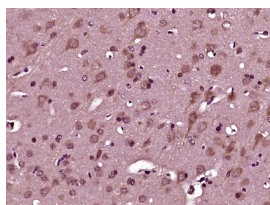
— DATASHEET —

Host: Rabbit	Isotype: IgG	Applications: WB (1:500-2000) IHC-P (1:100-500) IHC-F (1:100-500) IF (1:100-500) Reactivity: Human, Rat (predicted: Mouse, Pig, Sheep, Cow, Chicken, Dog, Horse) Predicted MW.: 109 kDa Subcellular Location: Cell membrane ,Cytoplasm
Clonality: Polyclonal		
GeneID: 23544	SWISS: Q9BYH1	
Target: SEZ6L		
Immunogen: KLH conjugated synthetic peptide derived from human SEZ6L: 701-800/1024.		
Purification: affinity purified by Protein A		
Concentration: 1mg/ml		
Storage: 0.01M TBS (pH7.4) with 1% BSA, 0.02% Proclin300 and 50% Glycerol. Shipped at 4°C. Store at -20°C for one year. Avoid repeated freeze/thaw cycles.		
Background: SEZ6L is a candidate tumor suppressor gene. This protein may contribute to specialized endoplasmic reticulum functions in neurons.		

— VALIDATION IMAGES —



Sample: HeLa(Human) Cell Lysate at 30 ug
Primary: Anti- SEZ6L (bs-6103R) at 1/1000
dilution Secondary: IRDye800CW Goat Anti-
Rabbit IgG at 1/20000 dilution Predicted band
size: 109 kD Observed band size: 110 kD



Paraformaldehyde-fixed, paraffin embedded (rat
brain tissue); Antigen retrieval by boiling in
sodium citrate buffer (pH6.0) for 15min; Block
endogenous peroxidase by 3% hydrogen
peroxide for 20 minutes; Blocking buffer (normal
goat serum) at 37°C for 30min; Antibody
incubation with (SEZ6L) Polyclonal Antibody,
Unconjugated (bs-6103R) at 1:400 overnight at
4°C, followed by operating according to SP
Kit(Rabbit) (sp-0023) instructions and DAB
staining.