

IGF2R/M6PR Recombinant Rabbit mAb

Catalog Number: bsm-60860R

Target Protein: IGF2R/M6PR

Concentration: 1mg/ml

Form: Liquid

Host: Rabbit

Clonality: Recombinant

Clone No.: 10H16

Isotype: IgG

Applications: WB (1:500-1000)

Reactivity: Human (predicted:Mouse, Rat)

Predicted MW: 300 kDa

Subcellular Extracellular matrix ,Cell membrane ,Cytoplasm

Locations:

Entrez Gene: 3482

Swiss Prot: P11717

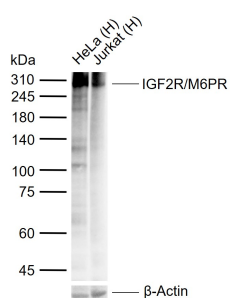
Purification: affinity purified by Protein A

Storage: PBS, Glycerol, BSA.

Shipped at 4°C. Store at -20°C for one year. Avoid repeated freeze/thaw cycles.

Background: Transport of phosphorylated lysosomal enzymes from the Golgi complex and the cell surface to lysosomes. Lysosomal enzymes bearing phosphomannosyl residues bind specifically to mannose-6-phosphate receptors in the Golgi apparatus and the resulting receptor-ligand complex is transported to an acidic prelysosomal compartment where the low pH mediates the dissociation of the complex. This receptor also binds IGF2. Acts as a positive regulator of T-cell coactivation, by binding DPP4.

VALIDATION IMAGES



Sample: Lane 1: Human HeLa cell lysates Lane 2: Human Jurkat cell lysates Primary: Anti-IGF2R/M6PR (bsm-60860R) at 1/1000 dilution Secondary: IRDye800CW Goat Anti-Rabbit IgG at 1/20000 dilution Predicted band size: 300 kDa Observed band size: 300 kDa