

bs-6094R**[Primary Antibody]****BioSS**
ANTIBODIES

www.bioss.com.cn

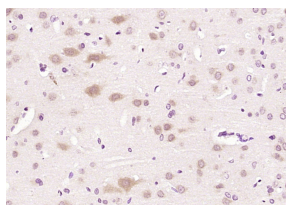
sales@bioss.com.cn

techsupport@bioss.com.cn

400-901-9800

RIN1 Rabbit pAb**— DATASHEET —**

Host: Rabbit	Isotype: IgG	Applications: IHC-P (1:100-500) IHC-F (1:100-500) IF (1:100-500)
Clonality: Polyclonal		
GeneID: 9610	SWISS: Q13671	
Target: RIN1		Reactivity: Rat (predicted: Human, Mouse, Pig, Cow)
Immunogen: KLH conjugated synthetic peptide derived from human RIN1: 201-300/783.		
Purification: affinity purified by Protein A		Predicted MW.: 84 kDa
Concentration: 1mg/ml		Subcellular Location: Cell membrane ,Cytoplasm
Storage: 0.01M TBS (pH7.4) with 1% BSA, 0.02% Proclin300 and 50% Glycerol. Shipped at 4°C. Store at -20°C for one year. Avoid repeated freeze/thaw cycles.		
Background: RIN1 is a Ras effector protein which can affect Ras signaling in a variety of ways. It enhances signaling from ABL1 and ABL2 which are involved in regulation of cytoskeletal remodeling. It may function as a guanine nucleotide exchange factor in activation of Rab5a. Rin1 also competes with RAF1 for binding of the activated form of Ras. It may play a role inhibiting the modulation of neuronal plasticity in formation of aversive memory, and has been implicated as a tumor suppressor gene in breast cancer.		

— VALIDATION IMAGES —

Paraformaldehyde-fixed, paraffin embedded (rat brain); Antigen retrieval by boiling in sodium citrate buffer (pH6.0) for 15min; Block endogenous peroxidase by 3% hydrogen peroxide for 20 minutes; Blocking buffer (normal goat serum) at 37°C for 30min; Antibody incubation with (RIN1) Polyclonal Antibody, Unconjugated (bs-6094R) at 1:200 overnight at 4°C, followed by operating according to SP Kit(Rabbit) (sp-0023) instructions and DAB staining.

— SELECTED CITATIONS —

- **[IF=3.7]** Roland Osei Saahene. et al. Expression of RAS and RAB interactor 1 (RIN1) in head and neck tumors at selected hospital in Ghana. PLOS ONE. 2024 Apr;19(4):e0301295 IHC ;Human. 38635569