

bs-1137R**[Primary Antibody]****BioSS**
ANTIBODIES

www.bioss.com.cn

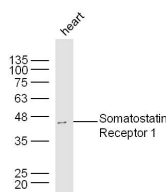
sales@bioss.com.cn

techsupport@bioss.com.cn

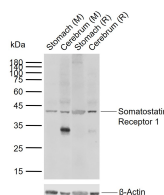
400-901-9800

Somatostatin Receptor 1 Rabbit pAb**DATASHEET**

Host: Rabbit Clonality: Polyclonal GeneID: 6751 Target: Somatostatin Receptor 1 Immunogen: KLH conjugated synthetic peptide derived from human SSTR1: 201-300/391. Purification: affinity purified by Protein A Concentration: 1mg/ml Storage: 0.01M TBS (pH7.4) with 1% BSA, 0.02% Proclin300 and 50% Glycerol. Shipped at 4°C. Store at -20°C for one year. Avoid repeated freeze/thaw cycles. Background: Somatostatins are peptide hormones that regulate diverse cellular functions such as neurotransmission, cell proliferation, and endocrine signaling as well as inhibiting the release of many hormones and other secretory proteins. Somatostatin has two active forms of 14 and 28 amino acids. The biological effects of somatostatins are mediated by a family of G-protein coupled somatostatin receptors that are expressed in a tissue-specific manner. The protein encoded by this gene is a member of the superfamily of somatostatin receptors having seven transmembrane segments. Somatostatin receptors form homodimers and heterodimers with other members of the superfamily as well as with other G-protein coupled receptors and receptor tyrosine kinases. This somatostatin receptor has greater affinity for somatostatin-14 than -28. [provided by RefSeq, Jul 2012]	Isotype: IgG SWISS: P30872 Applications: WB (1:500-2000) Reactivity: Human, Mouse, Rat (predicted: Pig, Cow, Dog, GuineaPig, Horse) Predicted MW.: 43 kDa Subcellular Location: Cell membrane
--	---

VALIDATION IMAGES

Sample: Heart(Mouse) Lysate at 30 ug Primary: Anti-Somatostatin Receptor 1(bs-1137R) at 1/300 dilution Secondary: IRDye800CW Goat Anti-Mouse IgG at 1/20000 dilution Predicted band size: 43 kD Observed band size: 43 kD



Sample: Lane 1: Mouse Stomach tissue lysates Lane 2: Mouse Cerebrum tissue lysates Lane 3: Rat Stomach tissue lysates Lane 4: Rat Cerebrum tissue lysates Primary: Anti-Somatostatin Receptor 1 (bs-1137R) at 1/1000 dilution Secondary: IRDye800CW Goat Anti-Rabbit IgG at 1/20000 dilution Predicted band size: 43 kDa Observed band size: 43 kDa