

## Streptavidin, IRDye 800CW conjugated

Catalog Number: bs-0437P-IRDye800CW

Concentration: 1mg/ml

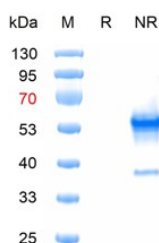
Form: Liquid

Storage: 10 mM TBS (pH=7.4) with 1% BSA, 0.02% Proclin300 and 50% Glycerol.

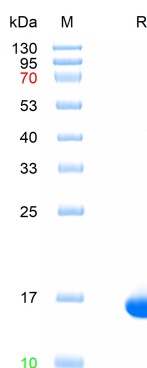
Shipped at 4°C. Store at -20 °C for one year. Avoid repeated freeze/thaw cycles.

**Background:** Streptavidin is a tetrameric protein composed of identical subunits. Each subunit binds one biotin molecule with a  $K_D$  of  $\sim 1 \times 10^{-15} M$ . The preparation contains an N- and C-terminal shortened variant (core streptavidin) with improved properties concerning homogeneity, solubility, resistance towards proteolytic degradation and accessibility of the biotin binding pocket as compared to native streptavidin. The high affinity recognition of biotin and biotinylated molecules has made streptavidin one of the most important components in diagnostics and laboratory kits.

### VALIDATION IMAGES



The purity of the protein is greater than 90% as determined by reducing SDS-PAGE.



The purity of the protein is greater than 90% as determined by reducing SDS-PAGE.