

bs-13498R**[Primary Antibody]****GPATCH1/ECGP Rabbit pAb****BioSS**
ANTIBODIES

www.bioss.com.cn

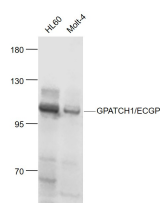
sales@bioss.com.cn

techsupport@bioss.com.cn

400-901-9800

— DATASHEET —

Host: Rabbit	Isotype: IgG	Applications: WB (1:500-2000)
Clonality: Polyclonal		Reactivity: Human (predicted: Mouse, Rat, Pig, Sheep, Cow, Dog, Horse)
GeneID: 55094	SWISS: Q9BRR8	
Target: GPATCH1/ECGP		Predicted MW.: 103 kDa
Immunogen: KLH conjugated synthetic peptide derived from human GPATCH1/ECGP: 651-750/931.		Subcellular Location: Nucleus
Purification: affinity purified by Protein A		
Concentration: 1mg/ml		
Storage: 0.01M TBS (pH7.4) with 1% BSA, 0.02% Proclin300 and 50% Glycerol. Shipped at 4°C. Store at -20°C for one year. Avoid repeated freeze/thaw cycles.		

— VALIDATION IMAGES —

Sample: HL60(Human) Cell Lysate at 30 ug
Molt-4 (Human) Cell Lysate at 30 ug Primary:
Anti- GPATCH1'ECGP (bs-13498R) at 1/1000
dilution Secondary: IRDye800CW Goat Anti-
Rabbit IgG at 1/20000 dilution Predicted band
size: 103 kD Observed band size: 103 kD