

bs-8446R**[Primary Antibody]****phospho-GluR1 (Ser849) Rabbit pAb****Bioss**
ANTIBODIES

www.bioss.com.cn

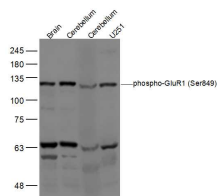
sales@bioss.com.cn

techsupport@bioss.com.cn

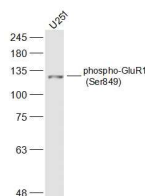
400-901-9800

— DATASHEET —

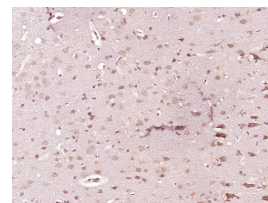
Host: Rabbit	Isotype: IgG	Applications: WB (1:500-2000) IHC-P (1:100-500) IHC-F (1:100-500) IF (1:50-200)
Clonality: Polyclonal		
GeneID: 2890	SWISS: P42261	
Target: GluR1 (Ser849)		
Immunogen: KLH conjugated synthesised phosphopeptide derived from human GluR1 around the phosphorylation site of Ser849: QQ(p-S)IN.		Reactivity: Human, Mouse, Rat (predicted: Pig, Sheep, Cow, Chicken, Dog, Horse)
Purification: affinity purified by Protein A		
Concentration: 1mg/ml		Predicted MW.: 98 kDa
Storage: 0.01M TBS (pH7.4) with 1% BSA, 0.02% Proclin300 and 50% Glycerol. Shipped at 4°C. Store at -20°C for one year. Avoid repeated freeze/thaw cycles.		Subcellular Location: Extracellular matrix ,Cell membrane ,Cytoplasm
Background: Glutamate receptors are the predominant excitatory neurotransmitter receptors in the mammalian brain and are activated in a variety of normal neurophysiologic processes. These receptors are heteromeric protein complexes with multiple subunits, each possessing transmembrane regions, and all arranged to form a ligand-gated ion channel. The classification of glutamate receptors is based on their activation by different pharmacologic agonists. This gene belongs to a family of alpha-amino-3-hydroxy-5-methyl-4-isoxazole propionate (AMPA) receptors. Alternatively spliced transcript variants encoding different isoforms have been found for this gene. [provided by RefSeq, Jul 2008].		

— VALIDATION IMAGES —

Sample: Brain (Mouse) Lysate at 40 ug
Cerebellum (Mouse) Lysate at 40 ug Cerebellum
(Rat) Lysate at 40 ug U251 (Human) Lysate at 30
ug Primary: Anti- phospho-GluR1 (Ser849)
(bs-8446R) at 1/500 dilution Secondary:
IRDye800CW Goat Anti-Rabbit IgG at 1/20000
dilution Predicted band size: 98 kD Observed
band size: 130 kD



Sample: Cerebrum (Mouse) Lysate at 40 ug
Cerebellum (Mouse) Lysate at 40 ug U251
(Human) Lysate at 30 ug Primary: Anti-phospho-
GluR1 (Ser849) (bs-8446R) at 1/500 dilution
Secondary: IRDye800CW Goat Anti-Rabbit IgG at
1/20000 dilution Predicted band size: 98 kD
Observed band size: 128 kD



Paraformaldehyde-fixed, paraffin embedded
(Rat brain); Antigen retrieval by boiling in
sodium citrate buffer (pH6.0) for 15min; Block
endogenous peroxidase by 3% hydrogen
peroxide for 20 minutes; Blocking buffer (normal
goat serum) at 37°C for 30min; Antibody
incubation with (phospho-GluR1 (Ser849))
Polyclonal Antibody, Unconjugated (bs-8446R)
at 1:400 overnight at 4°C, followed by operating
according to SP Kit(Rabbit) (sp-0023)
instructions and DAB staining.