

bs-2445R**[Primary Antibody]**

Bioss
ANTIBODIES

www.bioss.com.cn

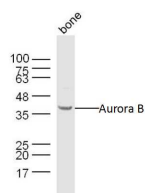
sales@bioss.com.cn

techsupport@bioss.com.cn

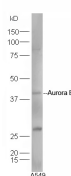
400-901-9800

Aurora B Rabbit pAb**DATASHEET**

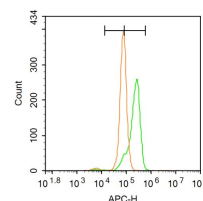
Host: Rabbit	Isotype: IgG	Applications: WB (1:500-2000) Flow-Cyt (3ug/Test)
Clonality: Polyclonal		Reactivity: Human, Mouse (predicted: Rat, Rabbit, Pig, Cow, Horse)
GeneID: 9212	SWISS: Q96GD4	Predicted MW.: 39 kDa
Target: Aurora B		Subcellular Location: Cytoplasm ,Nucleus
Immunogen: KLH conjugated synthetic peptide derived from human Aurora B: 51-150/344.		
Purification: affinity purified by Protein A		
Concentration: 1mg/ml		
Storage: 0.01M TBS (pH7.4) with 1% BSA, 0.02% Proclin300 and 50% Glycerol. Shipped at 4°C. Store at -20°C for one year. Avoid repeated freeze/thaw cycles.		
Background: This gene encodes a member of the aurora kinase subfamily of serine/threonine kinases. The genes encoding the other two members of this subfamily are located on chromosomes 19 and 20. These kinases participate in the regulation of segregation of chromosomes during mitosis and meiosis through association with microtubules. A pseudogene of this gene is located on chromosome 8. Multiple transcript variants encoding different isoforms have been found for this gene. [provided by RefSeq, Feb 2012].		

VALIDATION IMAGES

Sample: Bone (Mouse) Lysate at 40 ug Primary:
Anti-Aurora B (bs-2445R) at 1/300 dilution
Secondary: IRDye800CW Goat Anti-Rabbit IgG at
1/20000 dilution Predicted band size: 39 kD
Observed band size: 39 kD



Protein: A549(human) lysate at 30ug; Primary:
rabbit Anti-Aurora B (bs-2445R) at 1:300;
Secondary: HRP conjugated Goat-Anti-rabbit
IgG(bs-0295G-HRP) at 1: 5000; Predicted band
size: 39 kD Observed band size: 39 kD



Blank control: A431. Primary Antibody (green line): Rabbit Anti-Aurora B antibody (bs-2445R) Dilution: 3µg /10⁶ cells; Isotype Control Antibody (orange line): Rabbit IgG . Secondary Antibody : Goat anti-rabbit IgG-AF647 Dilution: 3µg /test. Protocol The cells were fixed with 4% PFA (10min at room temperature)and then permeabilized with 90% ice-cold methanol for 20 min at -20°C. The cells were then incubated in 5%BSA to block non-specific protein-protein interactions for 30 min at room temperature .Cells stained with Primary Antibody for 30 min at room temperature. The secondary antibody used for 40 min at room temperature. Acquisition of 20,000 events was performed.

SELECTED CITATIONS

- **[IF=13.91]** Ye, Buqing, et al. "Cytosolic carboxypeptidase CCP6 is required for megakaryopoiesis by modulating Mad2 polyglutamylation." The Journal of Experimental Medicine (2014): jem-20141123. WB ;Human. 25332286
- **[IF=11.47]** Suzuki, Ayumu, et al. "Loss of MAX results in meiotic entry in mouse embryonic and germline stem cells." Nature Communications 7 (2016). IHC ;Mouse. 27025988

Important Note: This product as supplied is intended for research use only, not for use in human, therapeutic or diagnostic applications.

- **[IF=6.922]** Yiguan Qian. et al. Pan-Cancer Transcriptomic Analysis Identifies PLK1 Crucial for the Tumorigenesis of Clear Cell Renal Cell Carcinoma. J Inflamm Res. 2022; 15: 1099–1116 WB ;Human. 35210814