

## phospho-SNAIL + SLUG (Ser246) Rabbit pAb

Catalog Number: bs-22884R

Target Protein: phospho-SNAIL + SLUG (Ser246)

Concentration: 1mg/ml

Form: Liquid

Host: Rabbit

Clonality: Polyclonal

Isotype: IgG

Applications: IHC-P (1:400-800), IHC-F (1:400-800), IF (1:100-500)

Reactivity: Human, Rat (predicted: Mouse, Rabbit, Pig, Sheep, Cow, Horse)

Predicted MW: 32 kDa

Subcellular: Cytoplasm, Nucleus

Locations:

Entrez Gene: 6615

Swiss Prot: O95863

Source: KLH conjugated synthesised phosphopeptide derived from human SNAIL around the phosphorylation site of Ser246: TF(p-S)RM.

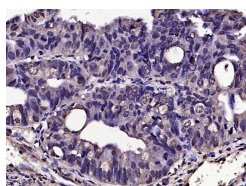
Purification: affinity purified by Protein A

Storage: 0.01M TBS (pH7.4) with 1% BSA, 0.02% Proclin300 and 50% Glycerol.

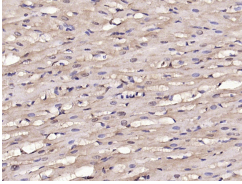
Shipped at 4°C. Store at -20°C for one year. Avoid repeated freeze/thaw cycles.

**Background:** The Drosophila embryonic protein snail is a zinc finger transcriptional repressor which downregulates the expression of ectodermal genes within the mesoderm. The nuclear protein encoded by this gene is structurally similar to the Drosophila snail protein, and is also thought to be critical for mesoderm formation in the developing embryo. At least two variants of a similar processed pseudogene have been found on chromosome 2. [provided by RefSeq, Jul 2008]

### VALIDATION IMAGES



Paraformaldehyde-fixed, paraffin embedded (human colon carcinoma); Antigen retrieval by boiling in sodium citrate buffer (pH6.0) for 15min; Block endogenous peroxidase by 3% hydrogen peroxide for 20 minutes; Blocking buffer (normal goat serum) at 37°C for 30min; Antibody incubation with (phospho-SNAIL + SLUG (Ser246)) Polyclonal Antibody, Unconjugated (bs-22884R) at 1:200 overnight at 4°C, followed by operating according to SP Kit(Rabbit) (sp-0023) instructions and DAB staining.



Paraformaldehyde-fixed, paraffin embedded (rat heart); Antigen retrieval by boiling in sodium citrate buffer (pH6.0) for 15min; Block endogenous peroxidase by 3% hydrogen peroxide for 20 minutes; Blocking buffer (normal goat serum) at 37°C for 30min; Antibody incubation with (phospho-SNAIL + SLUG (Ser246)) Polyclonal Antibody, Unconjugated (bs-22884R) at 1:200 overnight at 4°C, followed by operating according to SP Kit(Rabbit) (sp-0023) instructions and DAB staining.