

**bsm-54015R****[ Primary Antibody ]****BioSS**  
**ANTIBODIES**

www.bioss.com.cn

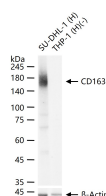
sales@bioss.com.cn

techsupport@bioss.com.cn

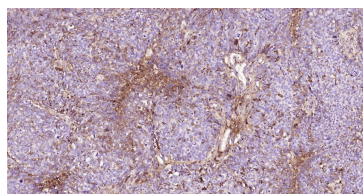
400-901-9800

**CD163 Recombinant Rabbit mAb****— DATASHEET —**

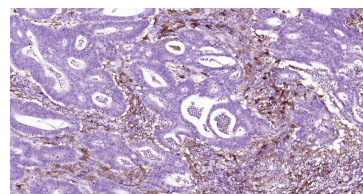
<b>Host:</b> Rabbit	<b>Isotype:</b> IgG	<b>Applications:</b> <b>WB</b> (1:500-2000) <b>IHC-P</b> (1:100-500) <b>IHC-F</b> (1:100-500) <b>IF</b> (1:100-500)  <b>Reactivity:</b> Human, Mouse, Rat  <b>Predicted MW.:</b> 130 kDa  <b>Subcellular Location:</b> Secreted ,Cell membrane
<b>Clonality:</b> Recombinant	<b>CloneNo.:</b> 8G1	
<b>GeneID:</b> 9332	<b>SWISS:</b> Q86VB7	
<b>Target:</b> CD163		
<b>Purification:</b> affinity purified by Protein A		
<b>Concentration:</b> 1mg/ml		
<b>Storage:</b> 0.01M TBS (pH7.4) with 1% BSA, 0.02% Proclin300 and 50% Glycerol. Shipped at 4°C. Store at -20°C for one year. Avoid repeated freeze/thaw cycles.		
<b>Background:</b> The protein encoded by this gene is a member of the scavenger receptor cysteine-rich (SRCR) superfamily, and is exclusively expressed in monocytes and macrophages. It functions as an acute phase-regulated receptor involved in the clearance and endocytosis of hemoglobin/haptoglobin complexes by macrophages, and may thereby protect tissues from free hemoglobin-mediated oxidative damage. This protein may also function as an innate immune sensor for bacteria and inducer of local inflammation. Alternatively spliced transcript variants encoding different isoforms have been described for this gene. [provided by RefSeq, Aug 2011]		

**— VALIDATION IMAGES —**

25 ug total protein per lane of various lysates (see on figure) probed with CD163 monoclonal antibody, unconjugated (bsm-54015R) at 1:1000 dilution and 4°C overnight incubation. Followed by conjugated secondary antibody incubation at r.t. for 60 min.



Paraformaldehyde-fixed, paraffin embedded Human Ovarian Cancer; Antigen retrieval by boiling in sodium citrate buffer (pH6.0) for 15 min; Antibody incubation with CD163 Monoclonal Antibody, Unconjugated(bsm-54015R) at 1:200 overnight at 4°C, followed by conjugation to the bs-0295G-HRP and DAB (C-0010) staining.



Paraformaldehyde-fixed, paraffin embedded Human Colon Cancer; Antigen retrieval by boiling in sodium citrate buffer (pH6.0) for 15 min; Antibody incubation with CD163 Monoclonal Antibody, Unconjugated(bsm-54015R) at 1:200 overnight at 4°C, followed by conjugation to the bs-0295G-HRP and DAB (C-0010) staining.

**— SELECTED CITATIONS —**

- **[IF=18.5]** Yizhou Zhu. et al. Photocurrent-Directed Immunoregulation Accelerates Osseointegration through Activating Calcium Influx in Macrophages. ADV FUNCT MATER. 2024 Oct;;2406095 IHC ;Rat. 10.1002/adfm.202406095
- **[IF=9.7]** Cui Lu. et al. Combining decellularized adipose tissue with decellularized adventitia extracellular matrix or small intestinal submucosa matrix for the construction of vascularized tissue-engineered adipose. ACTA BIOMATER. 2023 Sep;; IHC ;Rat. 37683968
- **[IF=8.7]** Xue Ou. et al.An MXene nanocomposite hydrogel for enhanced diabetic infected wound healing via photothermal antibacterial properties and bioactive molecule integration.Materials Today Bio.2025 Feb 8;31:101538. Western blot, IHC ;Mouse. 10.1016/j.mtbio.2025.101538
- **[IF=7.59]** Zhen Han. et al. Blockade of the Immune Checkpoint CD47 by TTI-621 Potentiates the Response to Anti-PD-L1

Important Note: This product as supplied is intended for research use only, not for use in human, therapeutic or diagnostic applications.

in Cutaneous T Cell Lymphoma. J INVEST DERMATOL. 2023 Mar;; IF ;Human. 36863449

- **[IF=7.1]** Onoi Yuma. et al. Human uncultured adipose-derived stromal vascular fraction shows therapeutic potential against osteoarthritis in immunodeficient rats via direct effects of transplanted M2 macrophages. STEM CELL RES THER. 2024 Dec;15(1):1-13 IHC ;Rat. 39334434