

bs-13573R

[Primary Antibody]

ZBTB39 Rabbit pAb

Bioss
ANTIBODIES

www.bioss.com.cn

sales@bioss.com.cn

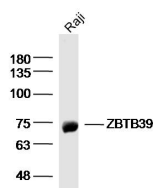
techsupport@bioss.com.cn

400-901-9800

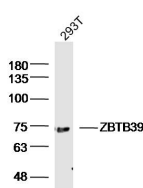
— DATASHEET —

Host: Rabbit	Isotype: IgG	Applications: WB (1:500-2000)
Clonality: Polyclonal		Reactivity: Human (predicted: Mouse, Rat, Rabbit, Sheep, Cow, Chicken, Dog, Horse)
GeneID: 9880	SWISS: O15060	
Target: ZBTB39		Predicted MW.: 79 kDa
Immunogen: KLH conjugated synthetic peptide derived from human ZBTB39: 1-100/712.		Subcellular Location: Nucleus
Purification: affinity purified by Protein A		
Concentration: 1mg/ml		
Storage: 0.01M TBS (pH7.4) with 1% BSA, 0.02% Proclin300 and 50% Glycerol. Shipped at 4°C. Store at -20°C for one year. Avoid repeated freeze/thaw cycles.		
Background: ZBTB39 may be involved in transcriptional regulation. It belongs to the krueppel C2H2-type zinc-finger protein family and contains one BTB (POZ) domain and eight C2H2-type zinc fingers.		

— VALIDATION IMAGES —



Sample: Raji (human) cell Lysate at 40 ug
Primary: Anti-ZBTB39 (bs-13573R) at 1/300
dilution Secondary: IRDye800CW Goat Anti-Rabbit IgG at 1/20000 dilution Predicted band size: 79 kD Observed band size: 75 kD



Sample: 293T (human) cell Lysate at 40 ug
Primary: Anti-ZBTB39 (bs-13573R) at 1/300
dilution Secondary: IRDye800CW Goat Anti-Rabbit IgG at 1/20000 dilution Predicted band size: 79 kD Observed band size: 75 kD