

**bs-0629R****[ Primary Antibody ]****Estrogen Sulfotransferase Rabbit pAb****BioSS**  
**ANTIBODIES**

www.bioss.com.cn

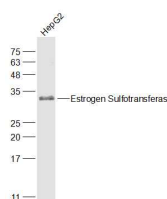
sales@bioss.com.cn

techsupport@bioss.com.cn

400-901-9800

**— DATASHEET —**

<b>Host:</b> Rabbit	<b>Isotype:</b> IgG	<b>Applications:</b> WB (1:500-2000)
<b>Clonality:</b> Polyclonal		<b>Reactivity:</b> Human (predicted: Mouse, Rat, Rabbit, Pig, Dog, Horse)
<b>GeneID:</b> 6783	<b>SWISS:</b> P49888	
<b>Target:</b> Estrogen Sulfotransferase		<b>Predicted MW.:</b> 32 kDa
<b>Immunogen:</b> KLH conjugated synthetic peptide derived from human Estrogen Sulfotransferase: 51-145/294.		<b>Subcellular Location:</b> Cytoplasm
<b>Purification:</b> affinity purified by Protein A		
<b>Concentration:</b> 1mg/ml		
<b>Storage:</b> 0.01M TBS (pH7.4) with 1% BSA, 0.02% Proclin300 and 50% Glycerol. Shipped at 4°C. Store at -20°C for one year. Avoid repeated freeze/thaw cycles.		
<b>Background:</b> Sulfotransferase enzymes catalyze the sulfate conjugation of many hormones, neurotransmitters, drugs, and xenobiotic compounds. These cytosolic enzymes are different in their tissue distributions and substrate specificities. The gene structure(number and length of exons) is similar among family members. This gene encodes a protein that transfers a sulfo moiety to and from estrone, which may control levels of estrogen receptors.		

**— VALIDATION IMAGES —**

Sample: HepG2(Human) Cell Lysate at 30 ug  
Primary: Anti-Estrogen Sulfotransferase  
(bs-0629R) at 1/1000 dilution Secondary:  
IRDye800CW Goat Anti-Rabbit IgG at 1/20000  
dilution Predicted band size: 32 kD Observed  
band size: 32 kD

**— SELECTED CITATIONS —**

- **[IF=3.3]** Arabacı Tamer Sevil. et al. Neuropeptide W protects against ovarian oxidative injury and reinforces ovarian steroidogenic activity via the upregulation of ER $\alpha$  expression. J PHARM PHARMACOL. 2024 Mar; IHC ;Rat. 38457354