

bs-9512R**[Primary Antibody]****Bioss**
ANTIBODIES

www.bioss.com.cn

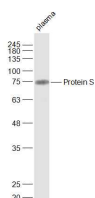
sales@bioss.com.cn

techsupport@bioss.com.cn

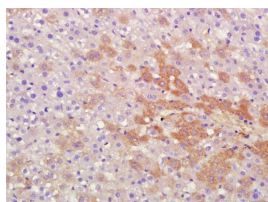
400-901-9800

Protein S Rabbit pAb**— DATASHEET —**

Host: Rabbit	Isotype: IgG	Applications: WB (1:500-2000) IHC-P (1:100-500) IHC-F (1:100-500) IF (1:100-500) Reactivity: Mouse, Rat (predicted: Human, Sheep, Cow, Horse) Predicted MW.: 71 kDa Subcellular Location: Secreted
Clonality: Polyclonal		
GeneID: 5627	SWISS: P07225	
Target: Protein S		
Immunogen: KLH conjugated synthetic peptide derived from human Protein S/PROS: 221-320/676.		
Purification: affinity purified by Protein A		
Concentration: 1mg/ml		
Storage: 0.01M TBS (pH7.4) with 1% BSA, 0.02% Proclin300 and 50% Glycerol. Shipped at 4°C. Store at -20°C for one year. Avoid repeated freeze/thaw cycles.		
Background: Protein S (PROS) is a vitamin K-dependent plasma protein that inhibits blood clotting by serving as a cofactor for activated protein C (APC) and facilitates clearance of early apoptotic cells. In the plasma, circulating Protein S becomes inactive upon complexing with C4b-binding protein (C4BP); 60-70% of Protein S circulates in complex with C4BP. Calcium-dependent association of C4BP-Protein S with apoptotic cells influences the regulation of complement activation. Protein S has APC-independent anticoagulant activity through direct inhibition of prothrombin activation via interactions with Factor X A, Factor V A and phospholipids. Autosomal dominant Protein S deficiency (levels 15 to 37% of normal) correlates with severe recurrent venous thrombosis.		

— VALIDATION IMAGES —

Sample: Plasma (Mouse) Lysate at 40 ug
Primary: Anti-Protein S (bs-9512R) at 1/1000
dilution Secondary: IRDye800CW Goat Anti-Rabbit IgG at 1/20000 dilution Predicted band size: 71 kD Observed band size: 75 kD



Paraformaldehyde-fixed, paraffin embedded (Rat liver); Antigen retrieval by boiling in sodium citrate buffer (pH6.0) for 15min; Block endogenous peroxidase by 3% hydrogen peroxide for 20 minutes; Blocking buffer (normal goat serum) at 37°C for 30min; Antibody incubation with (Protein S) Polyclonal Antibody, Unconjugated (bs-9512R) at 1:400 overnight at 4°C, followed by a conjugated secondary (sp-0023) for 20 minutes and DAB staining.