

bsm-33445M**[Primary Antibody]****BioSS**
ANTIBODIES

www.bioss.com.cn

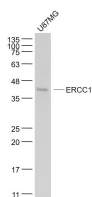
sales@bioss.com.cn

techsupport@bioss.com.cn

400-901-9800

ERCC1 Mouse mAb**— DATASHEET —**

Host: Mouse	Isotype: IgG1	Applications: WB (1:500-2000)
Clonality: Monoclonal	CloneNo.: 2A4	Reactivity: Human
GeneID: 2067	SWISS: P07992	
Target: ERCC1		
Purification: affinity purified by Protein A		Predicted MW.: 36 kDa
Concentration: 1mg/ml		Subcellular Location: Nucleus
Storage: Size : 50ul/100ul/200ul 0.01M TBS (pH7.4) with 1% BSA, 0.02% Proclin300 and 50% Glycerol. Size : 200ug (PBS only) 0.01M PBS Shipped at 4°C. Store at -20°C for one year. Avoid repeated freeze/thaw cycles.		
Background: The product of this gene functions in the nucleotide excision repair pathway, and is required for the repair of DNA lesions such as those induced by UV light or formed by electrophilic compounds including cisplatin. The encoded protein forms a heterodimer with the XPF endonuclease (also known as ERCC4), and the heterodimeric endonuclease catalyzes the 5' incision in the process of excising the DNA lesion. The heterodimeric endonuclease is also involved in recombinational DNA repair and in the repair of inter-strand crosslinks. Mutations in this gene result in cerebrooculofacioskeletal syndrome, and polymorphisms that alter expression of this gene may play a role in carcinogenesis. Multiple transcript variants encoding different isoforms have been found for this gene. The last exon of this gene overlaps with the CD3e molecule, epsilon associated protein gene on the opposite strand. [provided by RefSeq, Oct 2009]		

— VALIDATION IMAGES —

Sample: U87MG(Human) Cell Lysate at 30 ug
Primary: Anti- ERCC1 (bsm-33445M) at 1/1000
dilution Secondary: IRDye800CW Goat Anti-Mouse IgG at 1/20000 dilution Predicted band size: 36 kD Observed band size: 38 kD