

**bs-42267R****[ Primary Antibody ]****Slco1a1 Rabbit pAb****Bioss**  
**ANTIBODIES**

www.bioss.com.cn

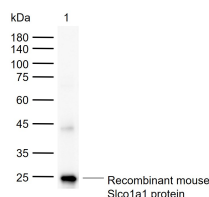
sales@bioss.com.cn

techsupport@bioss.com.cn

400-901-9800

**— DATASHEET —**

<b>Host:</b> Rabbit	<b>Isotype:</b> IgG	<b>Applications:</b> WB (1:500-2000)
<b>Clonality:</b> Polyclonal		<b>Reactivity:</b> Mouse (predicted: Rat)
<b>GeneID:</b> 28248	<b>SWISS:</b> Q9QXZ6	
<b>Target:</b> Slco1a1		
<b>Immunogen:</b> Recombinant mouse Slco1a1 protein: 108-158/670.		<b>Predicted MW.:</b> 74 kDa
<b>Purification:</b> affinity purified by Protein A		<b>Subcellular Location:</b> Cell membrane
<b>Concentration:</b> 1mg/ml		
<b>Storage:</b> 0.01M TBS (pH7.4) with 1% BSA, 0.02% Proclin300 and 50% Glycerol. Shipped at 4°C. Store at -20°C for one year. Avoid repeated freeze/thaw cycles.		
<b>Background:</b> mediates the transport of sulfated, amidated bile acid, sulfolithocholytaurine, into rat hepatocytes		

**— VALIDATION IMAGES —**

Sample: Lane 1: Recombinant mouse Slco1a1 protein, N-Trx&His(bs-42267P) Primary: Anti-Slco1a1 (bs-42267R) at 1/1000 dilution  
Secondary: IRDye800CW Goat Anti-Rabbit IgG at 1/20000 dilution Predicted band size: 74 kDa  
Observed band size: 25 kDa