

bsm-33435M**[Primary Antibody]****SRC Mouse mAb****BioSS**
ANTIBODIES

www.bioss.com.cn

sales@bioss.com.cn

techsupport@bioss.com.cn

400-901-9800

DATASHEET**Host:** Mouse**Clonality:** Monoclonal**GeneID:** 6714**Target:** SRC**Purification:** affinity purified by Protein A**Concentration:** 1mg/ml

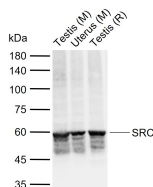
Storage: Size : 50ul/100ul/200ul
0.01M TBS (pH7.4) with 1% BSA, 0.02% Proclin300 and 50% Glycerol.
Size : 200ug (PBS only)
0.01M PBS
Shipped at 4°C. Store at -20°C for one year. Avoid repeated freeze/thaw cycles.

Background: This gene is highly similar to the v-src gene of Rous sarcoma virus. This proto-oncogene may play a role in the regulation of embryonic development and cell growth. The protein encoded by this gene is a tyrosine-protein kinase whose activity can be inhibited by phosphorylation by c-SRC kinase. Mutations in this gene could be involved in the malignant progression of colon cancer. Two transcript variants encoding the same protein have been found for this gene. [provided by RefSeq, Jul 2008]

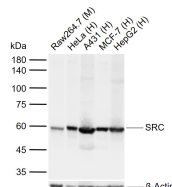
Isotype: IgG1**CloneNo.:** 6G3**SWISS:** P12931**Applications:** WB (1:500-2000)**Reactivity:** Human, Mouse, Rat

Predicted
MW.: 61 kDa

Subcellular Cell membrane ,Cytoplasm
Location: ,Nucleus

VALIDATION IMAGES

Sample: Lane 1: Mouse Testis tissue lysates Lane 2: Mouse Uterus tissue lysates Lane 3: Rat Testis tissue lysates Primary: Anti-SRC (bsm-33435M) at 1/1000 dilution Secondary: IRDye800CW Goat Anti-Mouse IgG at 1/20000 dilution Predicted band size: 61 kDa Observed band size: 60 kDa



Sample: Lane 1: Mouse Raw264.7 cell lysates Lane 2: Human HeLa cell lysates Lane 3: Human A431 cell lysates Lane 4: Human MCF-7 cell lysates Lane 5: Human HepG2 cell lysates Primary: Anti-SRC (bsm-33435M) at 1/1000 dilution Secondary: IRDye800CW Goat Anti-Mouse IgG at 1/20000 dilution Predicted band size: 61 kDa Observed band size: 60 kDa